

Cytokeratin 5/8 Antibody - With BSA and Azide
Mouse Monoclonal Antibody [Clone SPM268]
Catalog # AH12917

Specification

Cytokeratin 5/8 Antibody - With BSA and Azide - Product Information

Application ,1,14,3,4,
Primary Accession [P13647](#)
Other Accession [3852 \(CK5\)](#), [3856 \(CK8\)](#), [433845 \(CK5\)](#), [533782, 708445 \(CK8\)](#), [P05787 \(CK8\)](#)

Reactivity **Human, Mouse, Rat, Hamster, Pig, Cow, Sheep, Dog**

Host **Mouse**

Clonality **Monoclonal**

Isotype **Mouse / IgG1, kappa**

Calculated MW **58kDa (CK5); 52.5kDa (CK8) KDa**

Cytokeratin 5/8 Antibody - With BSA and Azide - Additional Information

Gene ID 3852

Other Names

Keratin, type II cytoskeletal 5, 58 kDa
cytokeratin, Cytokeratin-5, CK-5, Keratin-5, K5, Type-II keratin Kb5, KRT5

Storage

Store at 2 to 8°C. Antibody is stable for 24 months.

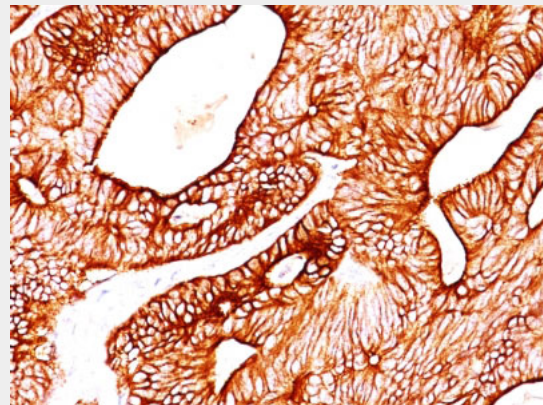
Precautions

Cytokeratin 5/8 Antibody - With BSA and Azide is for research use only and not for use in diagnostic or therapeutic procedures.

Cytokeratin 5/8 Antibody - With BSA and Azide - Protein Information

Name KRT5

Tissue Location



Formalin-fixed, paraffin-embedded human Colon Carcinoma stained with Cytokeratin 5/8 Monoclonal Antibody (SPM268).

Cytokeratin 5/8 Antibody - With BSA and Azide - Background

It reacts with keratin 5 (58kDa) and keratin 8 (52.5kDa). Simple epithelia express cytokeratin 8 in combination with 18. On the other hand, basal cells of stratified epithelia express cytokeratin 5 paired with 14. This antibody therefore, reacts with a wide range of epithelia and their carcinomas.

Cytokeratin 5/8 Antibody - With BSA and Azide - References

Vojtěšek et al. Folia Biol. 37(3-4): 197-206 (1991). | Bartkova et al. Neoplasma 38(4), 439-46 (1991). | Bartek et al. J. of Pathology 164, 215-24 (1991). | Kovařík et al. J. Tumor Marker Oncol. 5, 219 (1990). |

Expressed in corneal epithelium (at protein level).

Cytokeratin 5/8 Antibody - With BSA and Azide - Protocols

Provided below are standard protocols that you may find useful for product applications.

- [Western Blot](#)
- [Blocking Peptides](#)
- [Dot Blot](#)
- [Immunohistochemistry](#)
- [Immunofluorescence](#)
- [Immunoprecipitation](#)
- [Flow Cytometry](#)
- [Cell Culture](#)