

Insulin / IRDN (beta-Cell & Insulinoma Marker) Antibody - With BSA and Azide
Mouse Monoclonal Antibody [Clone SPM531]
Catalog # AH10533

Specification

Insulin / IRDN (beta-Cell & Insulinoma Marker) Antibody - With BSA and Azide - Product Information

| | |
|-------------------|---|
| Application | ,14,3,4, |
| Primary Accession | P01308 |
| Other Accession | 3630 , 272259 |
| Reactivity | Human, Rat, Rabbit, Pig, Cow |
| Host | Mouse |
| Clonality | Monoclonal |
| Isotype | Mouse / IgG1, kappa |
| Calculated MW | 6kDa KDa |

Insulin / IRDN (beta-Cell & Insulinoma Marker) Antibody - With BSA and Azide - Additional Information

Gene ID 3630

Other Names

Insulin, Insulin B chain, Insulin A chain, INS

Format

200ug/ml of Ab purified from Bioreactor Concentrate by Protein A/G. Prepared in 10mM PBS with 0.05% BSA & 0.05% azide. Also available WITHOUT BSA & azide at 1.0mg/ml.

Storage

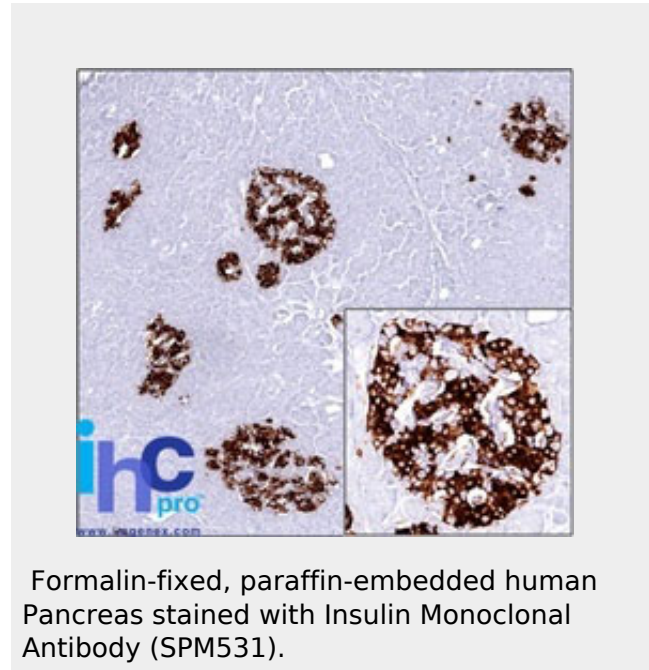
Store at 2 to 8°C. Antibody is stable for 24 months.

Precautions

Insulin / IRDN (beta-Cell & Insulinoma Marker) Antibody - With BSA and Azide is for research use only and not for use in diagnostic or therapeutic procedures.

Insulin / IRDN (beta-Cell & Insulinoma Marker) Antibody - With BSA and Azide - Protein Information

Name INS



Formalin-fixed, paraffin-embedded human Pancreas stained with Insulin Monoclonal Antibody (SPM531).

Insulin / IRDN (beta-Cell & Insulinoma Marker) Antibody - With BSA and Azide - Background

Recognizes a polypeptide which is identified as insulin, a 51-amino acid polypeptide composed of A and B chains connected through the C-peptide. Proinsulin, which has very little biological activity, is cleaved by proteases within its cell of origin into the insulin molecule and the C-terminal basic residue. Insulin enhances membrane transport of glucose, amino acids, and certain ions. It also promotes glycogen storage, formation of triglycerides, and synthesis of proteins and nucleic acids. Deficiency of insulin results in diabetes mellitus. The main storage site for insulin is the pancreatic islets. Antibodies to insulin are important as beta-cell and insulinoma marker.

Insulin / IRDN (beta-Cell & Insulinoma Marker) Antibody - With BSA and Azide - References

de la Tour, D., et al. 2001. Mol. Endoc. 15:

Function

Insulin decreases blood glucose concentration. It increases cell permeability to monosaccharides, amino acids and fatty acids. It accelerates glycolysis, the pentose phosphate cycle, and glycogen synthesis in liver.

476-483. | Rajagopal, J., et al. 2003. Science 299: 363. | Morisset, J., et al. 2003. J. Histochem. Cytochem. 51: 1501-1513

Cellular Location

Secreted.

Insulin / IRDN (beta-Cell & Insulinoma Marker) Antibody - With BSA and Azide - Protocols

Provided below are standard protocols that you may find useful for product applications.

- [Western Blot](#)
- [Blocking Peptides](#)
- [Dot Blot](#)
- [Immunohistochemistry](#)
- [Immunofluorescence](#)
- [Immunoprecipitation](#)
- [Flow Cytometry](#)
- [Cell Culture](#)