

HIC2 (aa188-200) Antibody (internal region)
Peptide-affinity purified goat antibody
Catalog # AF3832a

Specification

HIC2 (aa188-200) Antibody (internal region) - Product Information

Application	WB
Primary Accession	Q96JB3
Other Accession	NP_055909.2 , 23119 , 58180 (mouse), 287940 (rat)
Reactivity Predicted	Human Mouse, Rat, Pig, Dog, Cow
Host	Goat
Clonality	Polyclonal
Concentration	0.5 mg/ml
Isotype	IgG
Calculated MW	66156

HIC2 (aa188-200) Antibody (internal region) - Additional Information

Gene ID 23119

Other Names

Hypermethylated in cancer 2 protein, Hic-2, HIC1-related gene on chromosome 22 protein, Hic-3, Zinc finger and BTB domain-containing protein 30, HIC2, HRG22, KIAA1020, ZBTB30

Format

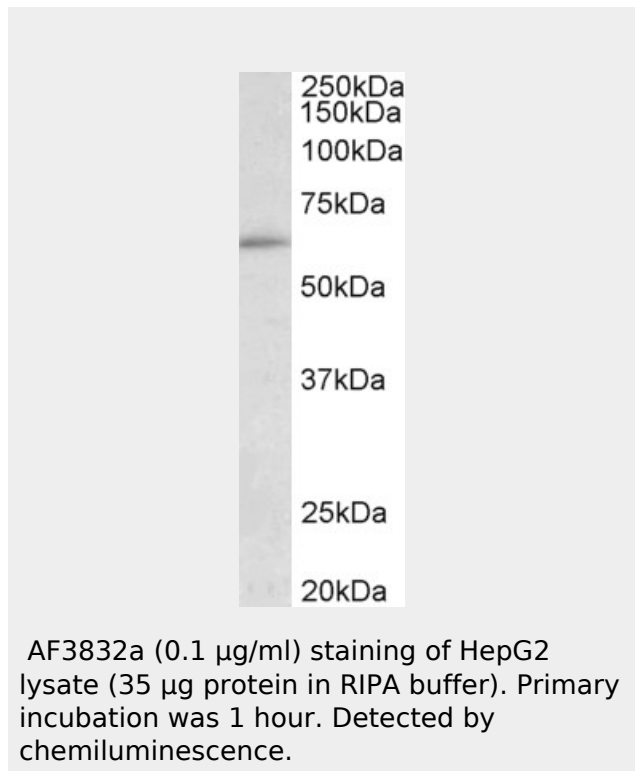
0.5 mg/ml in Tris saline, 0.02% sodium azide, pH7.3 with 0.5% bovine serum albumin

Storage

Maintain refrigerated at 2-8°C for up to 6 months. For long term storage store at -20°C in small aliquots to prevent freeze-thaw cycles.

Precautions

HIC2 (aa188-200) Antibody (internal region) is for research use only and not for use in diagnostic or therapeutic procedures.



HIC2 (aa188-200) Antibody (internal region) - References

Characterization of HRG22, a human homologue of the putative tumor suppressor gene HIC1 Deltour S, Pinte S, Guérardel C, Leprince D. Biochem Biophys Res Commun. 2001 Sep 21;287(2):427-34. PMID: 11554746

**HIC2 (aa188-200) Antibody (internal region) -
Protein Information**

Name HIC2

Synonyms HRG22, KIAA1020, ZBTB30

Function

Transcriptional repressor.

Cellular Location

Nucleus.

Tissue Location

Highest levels in cerebellum.

**HIC2 (aa188-200) Antibody (internal
region) - Protocols**

Provided below are standard protocols that you may find useful for product applications.

- [Western Blot](#)
- [Blocking Peptides](#)
- [Dot Blot](#)
- [Immunohistochemistry](#)
- [Immunofluorescence](#)
- [Immunoprecipitation](#)
- [Flow Cytometry](#)
- [Cell Culture](#)