

**MEX3C (aa541-554) Antibody (internal region)**  
Peptide-affinity purified goat antibody  
Catalog # AF3772a

**Specification**

**MEX3C (aa541-554) Antibody (internal region) - Product Information**

Application	WB
Primary Accession	<a href="#">Q5U5Q3</a>
Other Accession	<a href="#">NP_057710.3</a> , <a href="#">51320</a> , <a href="#">240396</a> (mouse), <a href="#">307271</a> (rat)
Reactivity Predicted	Mouse Human, Rat, Pig, Dog, Cow
Host	Goat
Clonality	Polyclonal
Concentration	0.5 mg/ml
Isotype	IgG
Calculated MW	69366

**MEX3C (aa541-554) Antibody (internal region) - Additional Information**

**Gene ID** 51320

**Other Names**

RNA-binding E3 ubiquitin-protein ligase MEX3C, 6.3.2.-, RING finger and KH domain-containing protein 2, RING finger protein 194, MEX3C, RKHD2, RNF194

**Format**

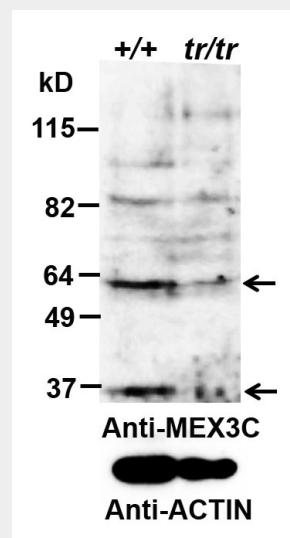
0.5 mg/ml in Tris saline, 0.02% sodium azide, pH7.3 with 0.5% bovine serum albumin

**Storage**

Maintain refrigerated at 2-8°C for up to 6 months. For long term storage store at -20°C in small aliquots to prevent freeze-thaw cycles.

**Precautions**

MEX3C (aa541-554) Antibody (internal region) is for research use only and not for use in diagnostic or therapeutic procedures.



AF3772a (0.2 µg/ml) staining of Mouse Testis (+/+ is wt, trp/trp is knock-down) lysate (35 µg protein in RIPA buffer). Data obtained by Dr. B. Lu, Wake Forest Baptist Medical Center, Winston-Salem, NC, USA. Primary incubation was 1 hour. Detected by chemiluminescence.

**MEX3C (aa541-554) Antibody (internal region) - References**

Identification and characterization of human Mex-3 proteins, a novel family of evolutionarily conserved RNA binding proteins differentially localized to processing bodies. Buchet-Poyau K, Courchet J, Le Hir H, Séraphin B, Scoazec JY, Duret L, Domon-Dell C, Freund JN, Billaud M. Nucleic Acids Res. 2007;35(4):1289-300. PMID: 17267406

**MEX3C (aa541-554) Antibody (internal region) - Protein Information****Name** MEX3C**Synonyms** RKHD2, RNF194**Function**

E3 ubiquitin ligase responsible for the post-transcriptional regulation of common HLA-A allotypes. Binds to the 3' UTR of HLA-A2 mRNA, and regulates its levels by promoting mRNA decay. RNA binding is sufficient to prevent translation, but ubiquitin ligase activity is required for mRNA degradation.

**Cellular Location**

Cytoplasm. Nucleus. Note=Predominantly expressed in the cytoplasm and shuttles between the cytoplasm and the nucleus through the CRM1 export pathway. May act as suppressor of replication stress and chromosome missegregation

**Tissue Location**

Highest levels found in fetal brain and testis. Also expressed in thymus, salivary gland and uterus. Highly expressed in cells of the innate immune system, in particular activated NK cells. Weak expression in the intestine.

**MEX3C (aa541-554) Antibody (internal region) - Protocols**

Provided below are standard protocols that you may find useful for product applications.

- [Western Blot](#)
- [Blocking Peptides](#)
- [Dot Blot](#)
- [Immunohistochemistry](#)
- [Immunofluorescence](#)
- [Immunoprecipitation](#)
- [Flow Cytometry](#)
- [Cell Culture](#)