

NOX1 Antibody (internal region)
Peptide-affinity purified goat antibody
Catalog # AF3415a

Specification

NOX1 Antibody (internal region) - Product Information

Application	WB
Primary Accession	Q9Y5S8
Other Accession	NP_008983.2 , NP_39249.1 , 27035 , 237038 (mouse)
Reactivity	Human, Mouse
Predicted	Cow, Dog
Host	Goat
Clonality	Polyclonal
Concentration	0.5 mg/ml
Isotype	IgG
Calculated MW	64871

NOX1 Antibody (internal region) - Additional Information

Gene ID 27035

Other Names

NADPH oxidase 1, NOX-1, 1.-.-.-, Mitogenic oxidase 1, MOX-1, NADH/NADPH mitogenic oxidase subunit P65-MOX, NOH-1, NOX1, MOX1, NOH1

Format

0.5 mg/ml in Tris saline, 0.02% sodium azide, pH7.3 with 0.5% bovine serum albumin

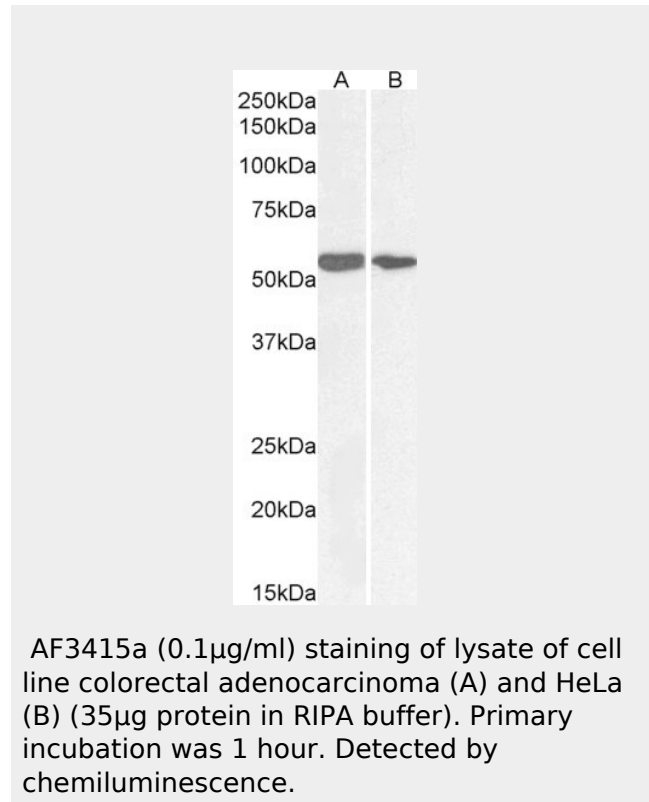
Storage

Maintain refrigerated at 2-8°C for up to 6 months. For long term storage store at -20°C in small aliquots to prevent freeze-thaw cycles.

Precautions

NOX1 Antibody (internal region) is for research use only and not for use in diagnostic or therapeutic procedures.

NOX1 Antibody (internal region) - Protein Information



NOX1 Antibody (internal region) - Background

This antibody is expected to recognize both reported isoforms (NP_008983.2; NP_39249.1).

NOX1 Antibody (internal region) - References

Transcriptional regulation of NADPH oxidase isoforms, Nox1 and Nox4, by nuclear factor-kappaB in human aortic smooth muscle cells. Manea A, Tanase LI, Raicu M, Simionescu M, Biochemical and biophysical research communications 2010 Jun 396 (4): 901-7. PMID: 20457132

Name NOX1**Synonyms** MOX1, NOH1**Function**

NOH-1S is a voltage-gated proton channel that mediates the H(+) currents of resting phagocytes and other tissues. It participates in the regulation of cellular pH and is blocked by zinc. NOH-1L is a pyridine nucleotide-dependent oxidoreductase that generates superoxide and might conduct H(+) ions as part of its electron transport mechanism, whereas NOH-1S does not contain an electron transport chain.

Cellular Location

Cell projection, invadopodium membrane; Multi-pass membrane protein. Cell membrane

Tissue Location

NOH-1L is detected in colon, uterus, prostate, and colon carcinoma, but not in peripheral blood leukocytes. NOH-1S is detected only in colon and colon carcinoma cells

**NOX1 Antibody (internal region) -
Protocols**

Provided below are standard protocols that you may find useful for product applications.

- [Western Blot](#)
- [Blocking Peptides](#)
- [Dot Blot](#)
- [Immunohistochemistry](#)
- [Immunofluorescence](#)
- [Immunoprecipitation](#)
- [Flow Cytometry](#)
- [Cell Culture](#)