

UCHL1 (aa 211-221) Antibody (C-Term)
Peptide-affinity purified goat antibody
Catalog # AF3278a

Specification

UCHL1 (aa 211-221) Antibody (C-Term) - Product Information

Application	WB, IHC
Primary Accession	P09936
Other Accession	NP_004172.2 , 7345 , 22223 (mouse) , 29545 (rat)
Reactivity	Human, Mouse, Rat
Predicted Host	Pig, Dog, Cow
Clonality	Goat
Concentration	0.5 mg/ml
Isotype	IgG
Calculated MW	24824

UCHL1 (aa 211-221) Antibody (C-Term) - Additional Information

Gene ID 7345

Other Names

Ubiquitin carboxyl-terminal hydrolase isozyme L1, UCH-L1, 3.4.19.12, 6.-.-., Neuron cytoplasmic protein 9.5, PGP 9.5, PGP9.5, Ubiquitin thioesterase L1, UCHL1

Format

0.5 mg/ml in Tris saline, 0.02% sodium azide, pH7.3 with 0.5% bovine serum albumin

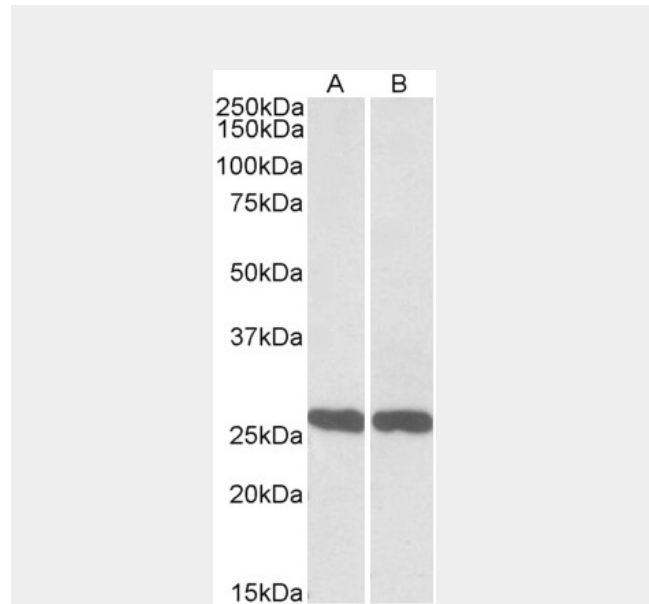
Storage

Maintain refrigerated at 2-8°C for up to 6 months. For long term storage store at -20°C in small aliquots to prevent freeze-thaw cycles.

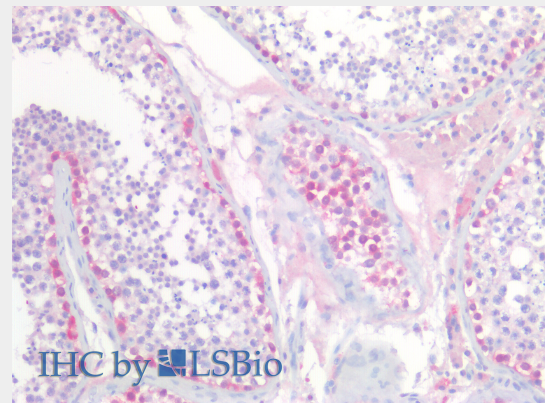
Precautions

UCHL1 (aa 211-221) Antibody (C-Term) is for research use only and not for use in diagnostic or therapeutic procedures.

UCHL1 (aa 211-221) Antibody (C-Term) - Protein



AF3278a (0.01µg/ml) staining of Mouse (A) and Rat (B) Brain lysate (35µg protein in RIPA buffer). Primary incubation was 1 hour. Detected by chemiluminescence.



AF3278a (5µg/ml) staining of paraffin embedded Human Testis. Steamed antigen retrieval with citrate buffer pH 6, AP-staining.

UCHL1 (aa 211-221) Antibody (C-Term) - References

Ubiquitin specific proteases USP24 and USP40 and ubiquitin thiolesterase UCHL1 polymorphisms have synergic effect on the risk

Information

Name UCHL1

Function

Ubiquitin-protein hydrolase involved both in the processing of ubiquitin precursors and of ubiquitinated proteins (Probable). This enzyme is a thiol protease that recognizes and hydrolyzes a peptide bond at the C-terminal glycine of ubiquitin (PubMed:9774100, PubMed:8639624, PubMed:12408865, PubMed:23359680). Also binds to free monoubiquitin and may prevent its degradation in lysosomes (By similarity). The homodimer may have ATP-independent ubiquitin ligase activity (PubMed:12408865).

Cellular Location

Cytoplasm. Endoplasmic reticulum membrane; Lipid- anchor. Note=About 30% of total UCHL1 is associated with membranes in brain

Tissue Location

Found in neuronal cell bodies and processes throughout the neocortex (at protein level). Expressed in neurons and cells of the diffuse neuroendocrine system and their tumors. Weakly expressed in ovary. Down-regulated in brains from Parkinson disease and Alzheimer disease patients.

of Parkinson's disease among Taiwanese. Wu YR, Chen CM, Chen YC, Chao CY, Ro LS, Fung HC, Hsiao YC, Hu FJ, Lee-Chen GJ, Clinica chimica acta; international journal of clinical chemistry 2010 Mar : . PMID: 20302855

UCHL1 (aa 211-221) Antibody (C-Term) - Protocols

Provided below are standard protocols that you may find useful for product applications.

- [Western Blot](#)
- [Blocking Peptides](#)
- [Dot Blot](#)
- [Immunohistochemistry](#)

- [Immunofluorescence](#)
- [Immunoprecipitation](#)
- [Flow Cytometry](#)
- [Cell Culture](#)