

**MICS1 / GHITM (aa117-127) Antibody (internal region)**  
Peptide-affinity purified goat antibody  
Catalog # AF3096a

**Specification**

**MICS1 / GHITM (aa117-127) Antibody (internal region) - Product Information**

Application	WB
Primary Accession	<a href="#">Q9H3K2</a>
Other Accession	<a href="#">NP_055209.2</a> , <a href="#">27069</a> , <a href="#">290596 (rat)</a>
Reactivity	Human
Predicted	Rat, Dog, Cow
Host	Goat
Clonality	Polyclonal
Concentration	0.5 mg/ml
Isotype	IgG
Calculated MW	37205

**MICS1 / GHITM (aa117-127) Antibody (internal region) - Additional Information**

**Gene ID** 27069

**Other Names**

Growth hormone-inducible transmembrane protein, Dermal papilla-derived protein 2, Mitochondrial morphology and cristae structure 1, MICS1, Transmembrane BAX inhibitor motif-containing protein 5, GHITM, DERP2, MICS1, TMBIM5

**Format**

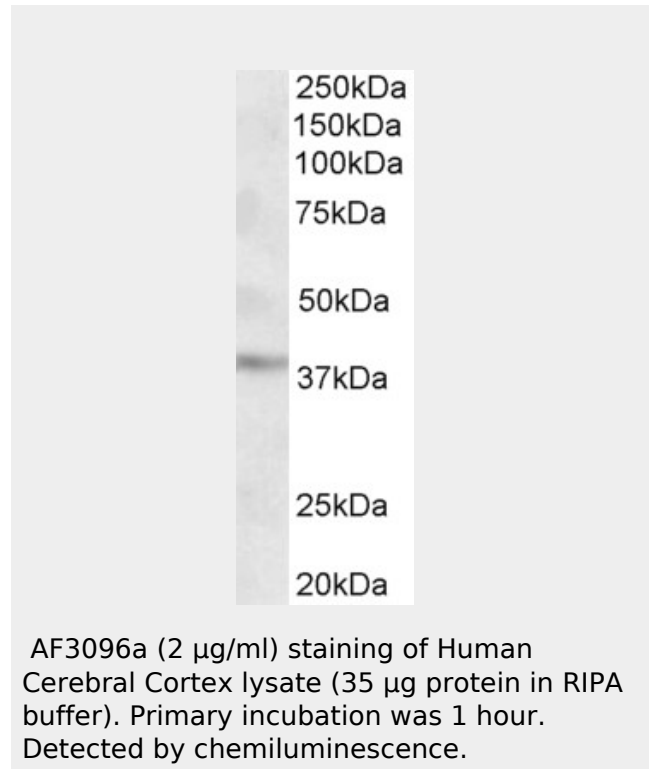
0.5 mg/ml in Tris saline, 0.02% sodium azide, pH7.3 with 0.5% bovine serum albumin

**Storage**

Maintain refrigerated at 2-8°C for up to 6 months. For long term storage store at -20°C in small aliquots to prevent freeze-thaw cycles.

**Precautions**

MICS1 / GHITM (aa117-127) Antibody (internal region) is for research use only and not for use in diagnostic or therapeutic procedures.



**MICS1 / GHITM (aa117-127) Antibody (internal region) - References**

Comparative genomics and function analysis on BI1 family. Zhou J, Zhu T, Hu C, Li H, Chen G, Xu G, Wang S, Zhou J, Ma D, Computational biology and chemistry 2008 Jun 32 (3): 159-62. PMID: 18440869

**MICS1 / GHITM (aa117-127) Antibody (internal region) - Protein Information**

**Name** GHITM

**Synonyms** DERP2, MICS1, TMBIM5

**Function**

Required for the mitochondrial tubular network and cristae organization. Involved in apoptotic release of cytochrome c.

**Cellular Location**

Mitochondrion inner membrane; Multi-pass membrane protein

**MICS1 / GHITM (aa117-127) Antibody (internal region) - Protocols**

Provided below are standard protocols that you may find useful for product applications.

- [Western Blot](#)
- [Blocking Peptides](#)
- [Dot Blot](#)
- [Immunohistochemistry](#)
- [Immunofluorescence](#)
- [Immunoprecipitation](#)
- [Flow Cytometry](#)
- [Cell Culture](#)