

**UBR4 / ZUBR1 Antibody (C-Term)**  
Peptide-affinity purified goat antibody  
Catalog # AF3012a

**Specification**

**UBR4 / ZUBR1 Antibody (C-Term) - Product Information**

Application	IHC
Primary Accession	<a href="#">Q5T4S7</a>
Other Accession	<a href="#">NP_065816.2</a> , <a href="#">23352</a> , <a href="#">69116</a> (mouse), <a href="#">313658</a> (rat)
Reactivity Predicted	Human Mouse, Rat, Dog, Cow
Host	Goat
Clonality	Polyclonal
Concentration	0.5 mg/ml
Isotype	IgG
Calculated MW	573841

**UBR4 / ZUBR1 Antibody (C-Term) - Additional Information**

**Gene ID** 23352

**Other Names**

E3 ubiquitin-protein ligase UBR4, 6.3.2.-, 600 kDa retinoblastoma protein-associated factor, N-recognin-4, Retinoblastoma-associated factor of 600 kDa, RBAF600, p600, Zinc finger UBR1-type protein 1, UBR4, KIAA0462, KIAA1307, RBAF600, ZUBR1

**Format**

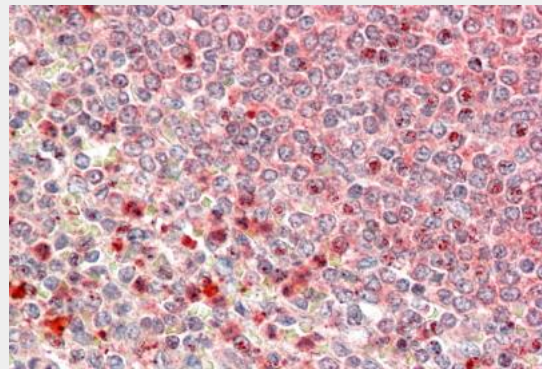
0.5 mg/ml in Tris saline, 0.02% sodium azide, pH7.3 with 0.5% bovine serum albumin

**Storage**

Maintain refrigerated at 2-8°C for up to 6 months. For long term storage store at -20°C in small aliquots to prevent freeze-thaw cycles.

**Precautions**

UBR4 / ZUBR1 Antibody (C-Term) is for research use only and not for use in



AF3012a (5 µg/ml) staining of paraffin embedded Human Spleen. Steamed antigen retrieval with citrate buffer pH 6, AP-staining.

**UBR4 / ZUBR1 Antibody (C-Term) - References**

The response of autologous T cells to a human melanoma is dominated by mutated neoantigens. Lennerz V, Fatho M, Gentilini C, Frye RA, Lifke A, Ferel D, Wölfel C, Huber C, Wölfel T. Proceedings of the National Academy of Sciences of the United States of America 2005 Nov 102 (44): 16013-8. PMID: 16247014

diagnostic or therapeutic procedures.

**UBR4 / ZUBR1 Antibody (C-Term) - Protein Information**

**Name** UBR4

**Synonyms** KIAA0462, KIAA1307, RBAF600, ZUBR1

**Function**

E3 ubiquitin-protein ligase which is a component of the N-end rule pathway. Recognizes and binds to proteins bearing specific N- terminal residues that are destabilizing according to the N-end rule, leading to their ubiquitination and subsequent degradation. Together with clathrin, forms meshwork structures involved in membrane morphogenesis and cytoskeletal organization. Regulates integrin- mediated signaling. May play a role in activation of FAK in response to cell-matrix interactions. Mediates ubiquitination of ACLY, leading to its subsequent degradation.

**Cellular Location**

Membrane; Multi-pass membrane protein. Cytoplasm. Cytoplasm, cytoskeleton. Nucleus Note=Concentrates at the leading edge of membrane structures involved in actin motility

**UBR4 / ZUBR1 Antibody (C-Term) - Protocols**

Provided below are standard protocols that you may find useful for product applications.

- [Western Blot](#)
- [Blocking Peptides](#)
- [Dot Blot](#)
- [Immunohistochemistry](#)
- [Immunofluorescence](#)
- [Immunoprecipitation](#)
- [Flow Cytometry](#)
- [Cell Culture](#)