

Dual oxidase 1 Antibody (internal region)
Peptide-affinity purified goat antibody
Catalog # AF2754a

Specification

**Dual oxidase 1 Antibody (internal region) -
Product Information**

Application	IHC
Primary Accession	Q9NRD9
Other Accession	NP_059130.2 , NP_787954.1 , 53905
Reactivity	Human
Host	Goat
Clonality	Polyclonal
Concentration	0.5 mg/ml
Isotype	IgG
Calculated MW	177235

**Dual oxidase 1 Antibody (internal region) -
Additional Information**

Gene ID 53905

Other Names

Dual oxidase 1, 1.11.1.-, 1.6.3.1, Large NOX 1, Long NOX 1, NADPH thyroid oxidase 1, Thyroid oxidase 1, DUOX1, DUOX, LNOX1, THOX1

Format

0.5 mg/ml in Tris saline, 0.02% sodium azide, pH7.3 with 0.5% bovine serum albumin

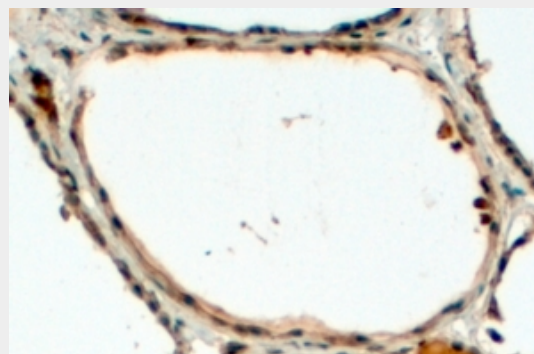
Storage

Maintain refrigerated at 2-8°C for up to 6 months. For long term storage store at -20°C in small aliquots to prevent freeze-thaw cycles.

Precautions

Dual oxidase 1 Antibody (internal region) is for research use only and not for use in diagnostic or therapeutic procedures.

**Dual oxidase 1 Antibody (internal region) -
Protein Information**



AF2754a (4 µg/ml) staining of paraffin embedded Human Thyroid Gland. Steamed antigen retrieval with Tris/EDTA buffer pH 9, HRP-staining.

**Dual oxidase 1 Antibody (internal region) -
Background**

This antibody is expected to recognise both reported isoforms (NP_059130.2 ; NP_787954.1) which are identical;

**Dual oxidase 1 Antibody (internal region) -
References**

Differential regulation of dual NADPH oxidases/peroxidases, Duox1 and Duox2, by Th1 and Th2 cytokines in respiratory tract epithelium. Harper RW, Xu C, Eiserich JP, Chen Y, Kao CY, Thai P, Setiadi H, Wu R. FEBS Lett. 2005 Aug 29;579(21):4911-7. PMID: 16111680

Name DUOX1

Synonyms DUOX, LNOX1, THOX1

Function

Generates hydrogen peroxide which is required for the activity of thyroid peroxidase/TPO and lactoperoxidase/LPO. Plays a role in thyroid hormones synthesis and lactoperoxidase-mediated antimicrobial defense at the surface of mucosa. May have its own peroxidase activity through its N-terminal peroxidase-like domain.

Cellular Location

Apical cell membrane; Multi-pass membrane protein. Note=Localizes to the apical membrane of epithelial cells

Tissue Location

Expressed in thyrocytes and tracheal surface epithelial cells (at protein level). Expressed in thyroid, trachea, bronchium, and to a lower extent, in placenta, testis, prostate, pancreas and heart.

Dual oxidase 1 Antibody (internal region) - Protocols

Provided below are standard protocols that you may find useful for product applications.

- [Western Blot](#)
- [Blocking Peptides](#)
- [Dot Blot](#)
- [Immunohistochemistry](#)
- [Immunofluorescence](#)
- [Immunoprecipitation](#)
- [Flow Cytometry](#)
- [Cell Culture](#)