

Goat Anti-RBP1 Antibody

Peptide-affinity purified goat antibody
Catalog # AF1919a

Specification

Goat Anti-RBP1 Antibody - Product Information

Application	IHC, WB
Primary Accession	P09455
Other Accession	NP_002890 , 5947
Reactivity	Human, Mouse
Predicted	Cow
Host	Goat
Clonality	Polyclonal
Concentration	100ug/200ul
Isotype	IgG
Calculated MW	15850

Goat Anti-RBP1 Antibody - Additional Information

Gene ID 5947

Other Names

Retinol-binding protein 1, Cellular retinol-binding protein, CRBP, Cellular retinol-binding protein I, CRBP-I, RBP1, CRBP1

Format

0.5 mg IgG/ml in Tris saline (20mM Tris pH7.3, 150mM NaCl), 0.02% sodium azide, with 0.5% bovine serum albumin

Storage

Maintain refrigerated at 2-8°C for up to 6 months. For long term storage store at -20°C in small aliquots to prevent freeze-thaw cycles.

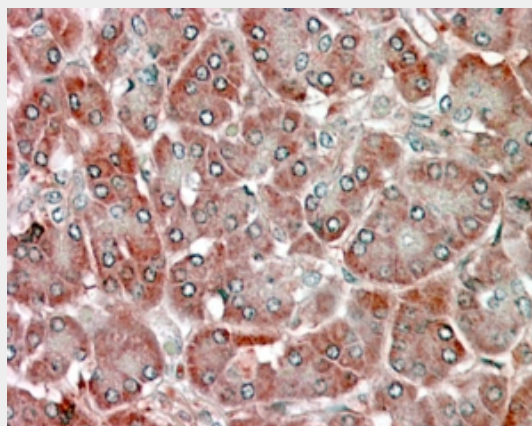
Precautions

Goat Anti-RBP1 Antibody is for research use only and not for use in diagnostic or therapeutic procedures.

Goat Anti-RBP1 Antibody - Protein Information

Name RBP1

Synonyms CRBP1



AF1919a (5 µg/ml) staining of paraffin embedded Human Pancreas. Steamed antigen retrieval with citrate buffer pH 6, AP-staining.



AF1919a (0.1 µg/ml) staining of NIH 3T3 lysate (35 µg protein in RIPA buffer). Primary incubation was 1 hour. Detected by chemiluminescence.

Goat Anti-RBP1 Antibody - Background

This gene encodes the carrier protein involved in the transport of retinol (vitamin A alcohol) from the liver storage site to peripheral tissue. Vitamin A is a fat-soluble vitamin necessary for growth, reproduction, differentiation of epithelial tissues, and vision. Multiple

Function

Cytoplasmic retinol-binding protein (PubMed:22665496, PubMed:26900151, PubMed:28057518). Accepts retinol from the transport protein STRA6, and thereby contributes to retinol uptake, storage and retinoid homeostasis (PubMed:15632377, PubMed:22665496).

Cellular Location

Cytoplasm. Lipid droplet

Tissue Location

Detected in nearly all the tissues with higher expression in adult ovary, pancreas, pituitary gland and adrenal gland, and fetal liver.

transcript variants encoding different isoforms have been found for this gene.

Goat Anti-RBP1 Antibody - References

Variation at the NFATC2 Locus Increases the Risk of Thiazolinedione-Induced Edema in the Diabetes REduction Assessment with ramipril and rosiglitazone Medication (DREAM) Study. Bailey SD, et al. Diabetes Care, 2010 Jul 13. PMID 20628086.
Genetic variation in 3-hydroxy-3-methylglutaryl CoA reductase modifies the chemopreventive activity of statins for colorectal cancer. Lipkin SM, et al. Cancer Prev Res (Phila), 2010 May. PMID 20403997.
New insights on the protein-ligand interaction differences between the two primary cellular retinol carriers. Franzoni L, et al. J Lipid Res, 2010 Jun. PMID 19965581.
Gene-centric association signals for lipids and apolipoproteins identified via the HumanCVD BeadChip. Talmud PJ, et al. Am J Hum Genet, 2009 Nov. PMID 19913121.
Methylation of CLDN6, FBN2, RBP1, RBP4, TFPI2, and TMEFF2 in esophageal squamous cell carcinoma. Tsunoda S, et al. Oncol Rep, 2009 Apr. PMID 19288010.

Goat Anti-RBP1 Antibody - Protocols

Provided below are standard protocols that you may find useful for product applications.

- [Western Blot](#)
- [Blocking Peptides](#)
- [Dot Blot](#)
- [Immunohistochemistry](#)
- [Immunofluorescence](#)
- [Immunoprecipitation](#)
- [Flow Cytometry](#)
- [Cell Culture](#)