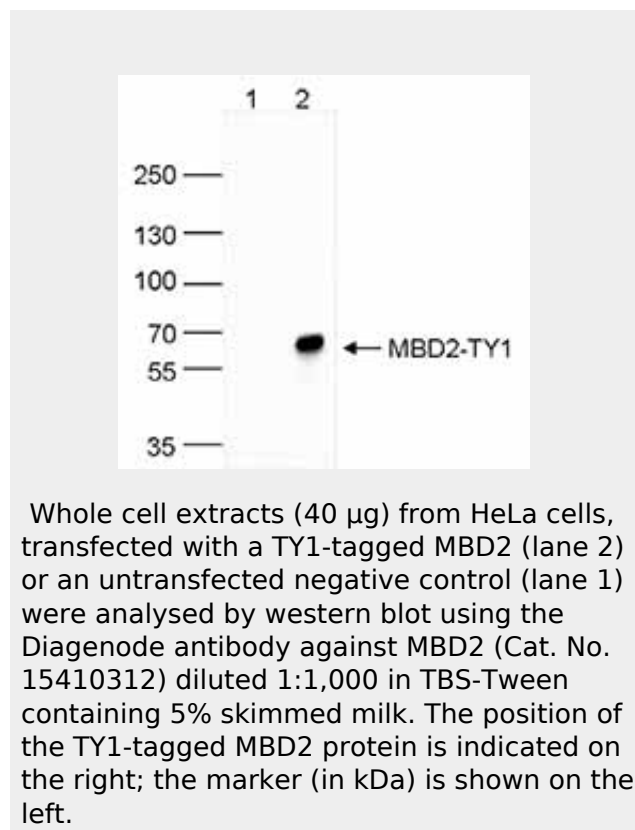


**MBD2, polyclonal antibody - Pioneer**  
**Purified rabbit polyclonal Antibody**  
**Catalog # ADN10289****Specification****MBD2, polyclonal antibody - Pioneer - Product Information**

Application	<b>WB</b>
Primary Accession	<a href="#">Q9UBB5</a>
Reactivity	<b>Human</b>
Host	<b>Rabbit</b>
Clonality	<b>Polyclonal</b>
Calculated MW	<b>43255</b>

**MBD2, polyclonal antibody - Pioneer - Additional Information****Gene ID** 8932**Other Names**Methyl-CpG-binding domain protein 2,  
Demethylase, DMTase, Methyl-CpG-binding  
protein MBD2, MBD2**Target/Specificity**

MBD2,

**Precautions**MBD2, polyclonal antibody - Pioneer is for  
research use only and not for use in  
diagnostic or therapeutic procedures.**MBD2, polyclonal antibody - Pioneer - Protein Information****Name** MBD2 ([HGNC:6917](#))**Function**Binds CpG islands in promoters where the  
DNA is methylated at position 5 of cytosine  
within CpG dinucleotides. Binds  
hemimethylated DNA as well. Recruits  
histone deacetylases and DNA  
methyltransferases. Acts as transcriptional  
repressor and plays a role in gene silencing.  
Functions as a scaffold protein, targeting  
GATAD2A and GATAD2B to chromatin to  
promote repression. May enhance the  
activation of some unmethylated  
cAMP-responsive promoters.

**Cellular Location**

Nucleus. Note=Nuclear, in discrete foci.  
Detected at replication foci in late S phase

**Tissue Location**

Highly expressed in brain, heart, kidney,  
stomach, testis and placenta.

**MBD2, polyclonal antibody - Pioneer -  
Protocols**

Provided below are standard protocols that you  
may find useful for product applications.

- [Western Blot](#)
- [Blocking Peptides](#)
- [Dot Blot](#)
- [Immunohistochemistry](#)
- [Immunofluorescence](#)
- [Immunoprecipitation](#)
- [Flow Cytometry](#)
- [Cell Culture](#)