

Leo1 polyclonal antibody
Purified Rabbit Polyclonal Antibody
Catalog # ADN10001

Specification

Leo1 polyclonal antibody - Product Information

Application	WB
Primary Accession	O8WVC0
Reactivity	Human
Host	Rabbit
Clonality	Polyclonal
Calculated MW	75404

Leo1 polyclonal antibody - Additional Information

Gene ID 123169

Other Names

RNA polymerase-associated protein LEO1,
Replicative senescence down-regulated
leo1-like protein, LEO1, RDL

Target/Specificity

Leo1

Precautions

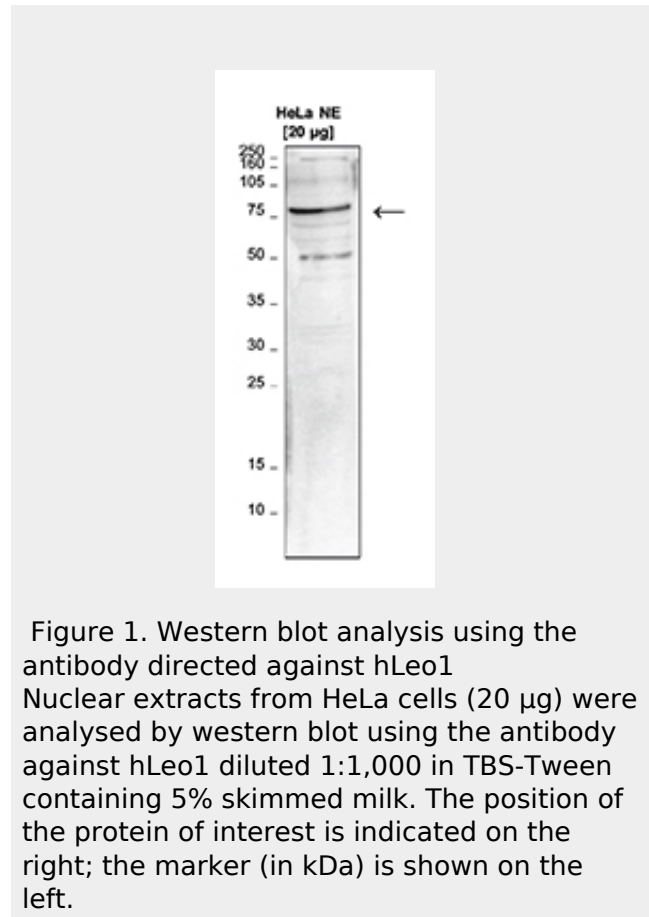
Leo1 polyclonal antibody is for research use only and not for use in diagnostic or therapeutic procedures.

Leo1 polyclonal antibody - Protein Information

Name LEO1

Function

Component of the PAF1 complex (PAF1C) which has multiple functions during transcription by RNA polymerase II and is implicated in regulation of development and maintenance of embryonic stem cell pluripotency. PAF1C associates with RNA polymerase II through interaction with POLR2A CTD non-phosphorylated and 'Ser-2'- and 'Ser- 5'-phosphorylated forms and is involved in transcriptional elongation, acting both independently and synergistically with TCEA1 and in cooperation with the DSIF complex and HTATSF1. PAF1C is required for



transcription of Hox and Wnt target genes. PAF1C is involved in hematopoiesis and stimulates transcriptional activity of KMT2A/MLL1; it promotes leukemogenesis through association with KMT2A/MLL1-rearranged oncoproteins, such as KMT2A/MLL1-MLLT3/AF9 and KMT2A/MLL1-MLLT1/ENL. PAF1C is involved in histone modifications such as ubiquitination of histone H2B and methylation on histone H3 'Lys-4' (H3K4me3). PAF1C recruits the RNF20/40 E3 ubiquitin-protein ligase complex and the E2 enzyme UBE2A or UBE2B to chromatin which mediate monoubiquitination of 'Lys-120' of histone H2B (H2BK120ub1); UB2A/B-mediated H2B ubiquitination is proposed to be coupled to transcription. PAF1C is involved in mRNA 3' end formation probably through association with cleavage and poly(A) factors. In case of infection by influenza A strain H3N2, PAF1C associates with viral NS1 protein, thereby regulating gene transcription. Involved in polyadenylation of mRNA precursors. Connects PAF1C to Wnt signaling.

Cellular Location

Nucleus.

Tissue Location

Highly expressed in skeletal muscle and heart. Weakly expressed in placenta and liver.

Leo1 polyclonal antibody - Protocols

Provided below are standard protocols that you may find useful for product applications.

- [Western Blot](#)
- [Blocking Peptides](#)
- [Dot Blot](#)
- [Immunohistochemistry](#)
- [Immunofluorescence](#)
- [Immunoprecipitation](#)
- [Flow Cytometry](#)
- [Cell Culture](#)