

**CD56 Antibody**  
**Mouse Monoclonal Antibody (Mab)**  
**Catalog # AD80211**

**Specification**

**CD56 Antibody - Product info**

Application	<b>IHC</b>
Primary Accession	<a href="#">P13591</a>
Reactivity	<b>Human</b>
Host	<b>Mouse</b>
Clonality	<b>Monoclonal</b>
Isotype	<b>IgG1</b>
Calculated MW	<b>94574</b>

**CD56 Antibody - Additional info**

Gene ID	<b>4684</b>
Gene Name	<b>NCAM1</b>
<b>Other Names</b>	
Neural cell adhesion molecule 1, N-CAM-1, NCAM-1, CD56, NCAM1, NCAM	

**Dilution**

IHC~~Ready-to-use

**Storage**

**Maintain refrigerated at 2-8°C for up to 2 weeks. For long term storage store at -20°C in small aliquots to prevent freeze-thaw cycles.**

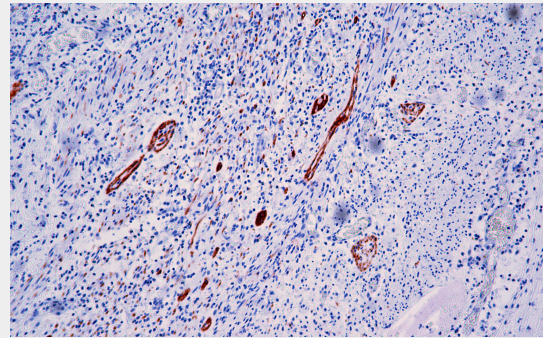
**Precautions**

**CD56 Antibody is for research use only and not for use in diagnostic or therapeutic procedures.**

**CD56 Antibody - Protein Information**

**Name NCAM1**

<b>Synonyms</b>	<b>NCAM</b>
<b>Function</b>	<b>This protein is a cell adhesion molecule involved</b>



Immunohistochemical analysis of paraffin-embedded vermiform appendix tissue using AD80211 performed on the Abcarta® FAIP-30 Fully automated IHC platform. Tissue was fixed with formaldehyde at room temperature, antigen retrieval was by heat mediation with a Citrate buffer (pH6.0). Samples were incubated with primary antibody (Ready-to-use) for 15 min at room temperature. AmpSee™ Detection Systems [Abcepta:AR005] was used as the secondary antibody.

Cellular Location

**in neuron-neuron adhesion, neurite fasciculation, outgrowth of neurites, etc.**  
**Isoform 1: Cell membrane;**  
**Single-pass type I membrane protein**  
**Isoform 3: Cell membrane;**  
**Lipid-anchor, GPI-anchor**  
**Isoform 5: Secreted.**

### **CD56 Antibody - Protocols**

Provided below are standard protocols that you may find useful for product applications.

- [Western Blot](#)
- [Blocking Peptides](#)
- [Dot Blot](#)
- [Immunohistochemistry](#)
- [Immunofluorescence](#)
- [Immunoprecipitation](#)
- [Flow Cytometry](#)
- [Cell Culture](#)