

**EGFR Antibody**  
**Rabbit Monoclonal Antibody (Mab)**  
**Catalog # AD80192**

**Specification**

**EGFR Antibody - Product info**

Application	<b>IHC</b>
Primary Accession	<a href="#">P00533</a>
Reactivity	<b>Human</b>
Host	<b>Rabbit</b>
Clonality	<b>Monoclonal</b>
Isotype	<b>IgG1</b>
Calculated MW	<b>134277</b>

**EGFR Antibody - Additional info**

Gene ID	<b>1956</b>
Gene Name	<b>EGFR</b>
<b>Other Names</b>	
Epidermal growth factor receptor, 2.7.10.1, Proto-oncogene c-ErbB-1, Receptor tyrosine-protein kinase erbB-1, EGFR, ERBB, ERBB1, HER1	

**Dilution**

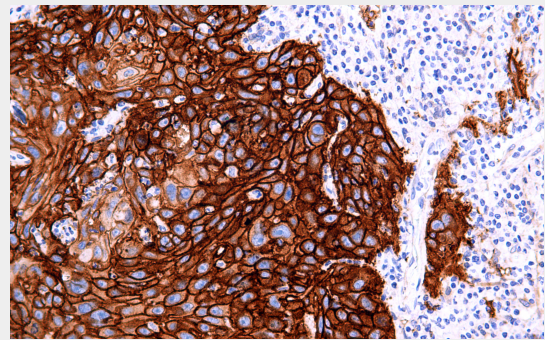
IHC~~Ready-to-use

**Storage**

**Maintain refrigerated at 2-8°C for up to 2 weeks. For long term storage store at -20°C in small aliquots to prevent freeze-thaw cycles.**

**Precautions**

**EGFR Antibody is for research use only and not for use in diagnostic or therapeutic procedures.**



Immunohistochemical analysis of paraffin-embedded human lung squamous carcinoma tissue using AD80192 performed on the Abcarta® FAIP-30 Fully automated IHC platform. Tissue was fixed with formaldehyde at room temperature, antigen retrieval was by heat mediation with a EDTA buffer (pH9.0). Samples were incubated with primary antibody (Ready-to-use) for 15 min at room temperature. AmpSee™ Detection Systems [Abcepta:AR005] was used as the secondary antibody.

**EGFR Antibody - Protein Information**

**Name** EGFR ([HGNC:3236](#))

**Synonyms** **ERBB, ERBB1, HER1**

**Function**

**Receptor tyrosine kinase binding ligands of the EGF family and activating several signaling cascades to convert extracellular cues into appropriate cellular responses (PubMed:[2790960](#), PubMed:[10805725](#), PubMed:[27153536](#) ). Known ligands include EGF, TGFA/TGF-alpha, AREG, epigen/EPGN, BTC/betacellulin, epiregulin/EREG and HBEGF/heparin-binding EGF (PubMed:[2790960](#), PubMed:[7679104](#), PubMed:[8144591](#), PubMed:[9419975](#), PubMed:[15611079](#), PubMed:[12297049](#), PubMed:[27153536](#), PubMed:[20837704](#) ). Ligand binding triggers receptor homo- and/or heterodimerization and autophosphorylation on key cytoplasmic residues. The phosphorylated receptor recruits adapter proteins like GRB2 which in turn activates complex downstream signaling cascades. Activates at least 4 major downstream signaling cascades**

including the RAS-RAF-MEK-ERK, PI3 kinase-AKT, PLCgamma-PKC and STATs modules (PubMed d:[27153536](#)). May also activate the NF-kappa-B signaling cascade (PubMed d:[11116146](#)). Also directly phosphorylates other proteins like RGS16, activating its GTPase activity and probably coupling the EGF receptor signaling to the G protein-coupled receptor signaling (PubMed d:[11602604](#)). Also phosphorylates MUC1 and increases its interaction with SRC and CTNNB1/beta-catenin (PubMed d:[11483589](#)). Plays a role in enhancing learning and memory performance (By similarity).

**Cellular Location**

Cell membrane; Single-pass type I membrane protein  
Endoplasmic reticulum membrane; Single-pass type I membrane protein.  
Golgi apparatus membrane; Single-pass type I membrane protein.  
Nucleus

Tissue Location	<p>membrane; Single-pass type I membrane protein. Endosome. Endosome membrane. Nucleus. Note=In response to EGF, translocated from the cell membrane to the nucleus via Golgi and ER (PubMed:2 0674546). Endocytosed upon activation by ligand (PubMed:2790960 , PubMed:1718286 0, PubMed:27153 536). Colocalized with GPER1 in the nucleus of estrogen agonist-induced cancer- associated fibroblasts (CAF) ( PubMed:2055105 5) Ubiquitously expressed. Isoform 2 is also expressed in ovarian cancers.</p>
-----------------	--

### EGFR Antibody - Protocols

Provided below are standard protocols that you may find useful for product applications.

- [Western Blot](#)
- [Blocking Peptides](#)
- [Dot Blot](#)
- [Immunohistochemistry](#)
- [Immunofluorescence](#)
- [Immunoprecipitation](#)
- [Flow Cytometry](#)
- [Cell Culture](#)