

Tyrosinase Antibody
Mouse Monoclonal Antibody (Mab)
Catalog # AD80147

Specification

Tyrosinase Antibody - Product info

Application	IHC
Primary Accession	P14679
Reactivity	Human
Host	Mouse
Clonality	Monoclonal
Isotype	IgG1
Calculated MW	60393

Tyrosinase Antibody - Additional info

Gene ID	7299
Gene Name	TYR
Other Names	
Tyrosinase, 1.14.18.1, LB24-AB, Monophenol monooxygenase, SK29-AB, Tumor rejection antigen AB, TYR	

Dilution

IHC~~Ready-to-use

Storage

Maintain refrigerated at 2-8°C for up to 2 weeks. For long term storage store at -20°C in small aliquots to prevent freeze-thaw cycles.

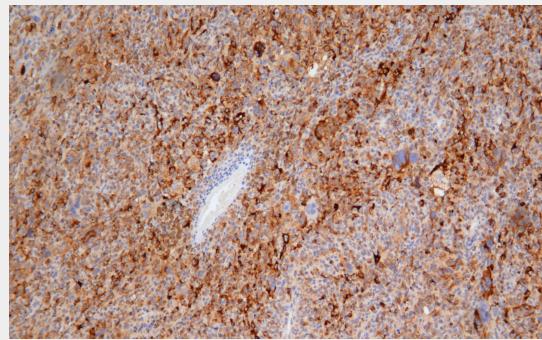
Precautions

Tyrosinase Antibody is for research use only and not for use in diagnostic or therapeutic procedures.

Tyrosinase Antibody - Protein Information

Name TYR

Function **This is a copper-containing**



Immunohistochemical analysis of paraffin-embedded 0 tissue using AD80299 performed on the Abcarta® FAIP-30 Fully automated IHC platform. Tissue was fixed with formaldehyde at room temperature, antigen retrieval was by heat mediation with a Citrate buffer (pH6. 0). Samples were incubated with primary antibody(Ready-to-use) for 15 min at room temperature. AmpSee™ Detection Systems□Abcepta:AR005□ was used as the secondary antibody.

Cellular Location

oxidase that functions in the formation of pigments such as melanins and other polyphenolic compounds. Catalyzes the initial and rate limiting step in the cascade of reactions leading to melanin production from tyrosine. In addition to hydroxylating tyrosine to DOPA (3,4- dihydroxyphenylalanine), also catalyzes the oxidation of DOPA to DOPA-quinone, and possibly the oxidation of DHI (5,6-dihydroxyindole) to indole-5,6 quinone. Melanosome membrane; Single-pass type I membrane protein. Melanosome {EC O:0000250|UniProtKB:P11344}. Note=Proper trafficking to melanosome is regulated by SGSM2, ANKRD27, RAB9A, RAB32 and RAB38 {ECO:0000250|UniProtKB:P11344}

Tyrosinase Antibody - Protocols

Provided below are standard protocols that you may find useful for product applications.

- [Western Blot](#)
- [Blocking Peptides](#)
- [Dot Blot](#)

- [Immunohistochemistry](#)
- [Immunofluorescence](#)
- [Immunoprecipitation](#)
- [Flow Cytometry](#)
- [Cell Culture](#)