

CD138 Antibody
Rabbit Monoclonal Antibody (Mab)
Catalog # AD80117

Specification

CD138 Antibody - Product info

Application	IHC
Primary Accession	P18827
Reactivity	Human
Host	Rabbit
Clonality	Monoclonal
Isotype	IgG
Calculated MW	32462

CD138 Antibody - Additional info

Gene ID	6382
Gene Name	SDC1
Other Names	
Syndecan-1, SYND1, CD138, SDC1, SDC	

Dilution

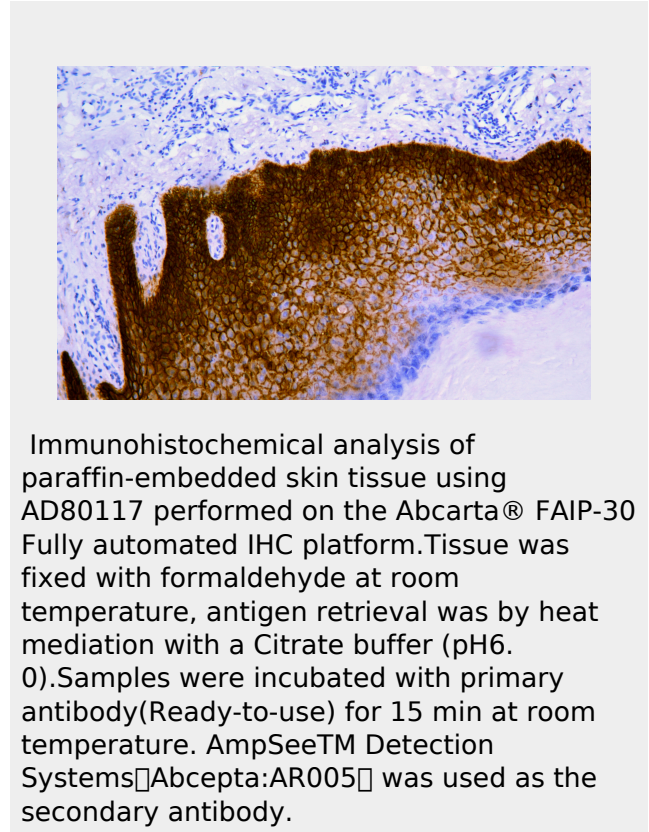
IHC~~Ready-to-use

Storage

Maintain refrigerated at 2-8°C for up to 2 weeks. For long term storage store at -20°C in small aliquots to prevent freeze-thaw cycles.

Precautions

CD138 Antibody is for research use only and not for use in diagnostic or therapeutic procedures.



CD138 Antibody - Protein Information

Name SDC1

Synonyms	SDC
Function	Cell surface proteoglycan that bears both

Cellular Location

heparan sulfate and chondroitin sulfate and that links the cytoskeleton to the interstitial matrix. Regulates exosome biogenesis in concert with SDCBP and PDCD6IP (PubMed:22660413). Membrane; Single-pass type I membrane protein. Secreted. Secreted, exosome. Note=Shedding of the ectodomain produces a soluble form.

CD138 Antibody - Protocols

Provided below are standard protocols that you may find useful for product applications.

- [Western Blot](#)
- [Blocking Peptides](#)
- [Dot Blot](#)
- [Immunohistochemistry](#)
- [Immunofluorescence](#)
- [Immunoprecipitation](#)
- [Flow Cytometry](#)
- [Cell Culture](#)