

**Anti-TRAPPC5 Antibody**  
Rabbit Polyclonal antibody  
Catalog # ABV11881

**Specification**

**Anti-TRAPPC5 Antibody - Product Information**

Application	<b>IHC, WB</b>
Primary Accession	<a href="#">Q8IURO</a>
Reactivity	<b>Human, Mouse, Rat</b>
Host	<b>Rabbit</b>
Clonality	<b>Polyclonal</b>
Isotype	<b>Rabbit IgG</b>
Calculated MW	<b>20783</b>

**Anti-TRAPPC5 Antibody - Additional Information**

**Gene ID** 126003

Positive Control	<b>WB: A549, NIH3T3, H9C2 lysates; IHC: human lung cancer tissue</b>
Application & Usage	<b>WB; 1:500 - 1:2000, IHC; 1:50 - 1:200</b>
Alias Symbol	<b>TRAPPC5</b>

**Other Names**  
Trafficking protein particle complex subunit 5

**Formulation**

In 0.42% Potassium phosphate; 0.87% Sodium chloride; pH 7.3; 30% glycerol and 0.01% sodium azide

**Reconstitution & Storage**

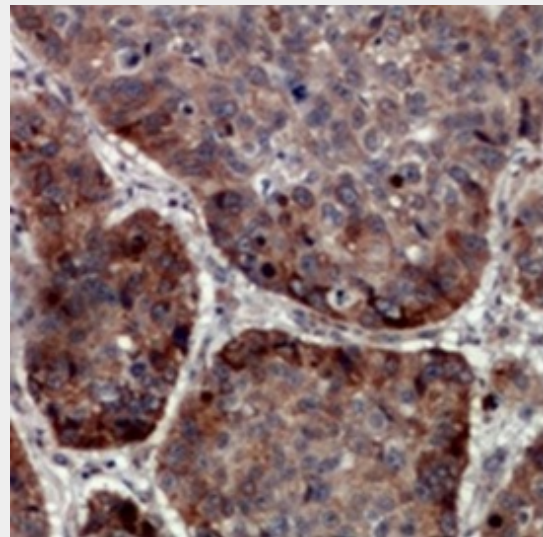
12 months under -20°C

**Background Descriptions**

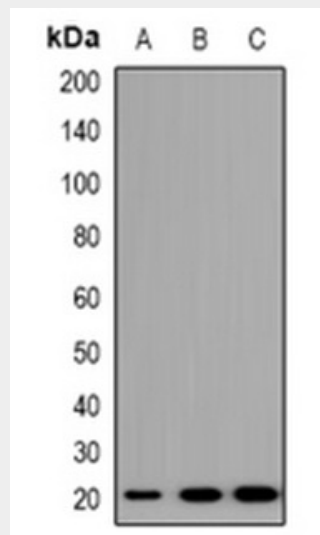
**Precautions**

Anti-TRAPPC5 Antibody is for research use only and not for use in diagnostic or therapeutic procedures.

**Anti-TRAPPC5 Antibody - Protein Information**



Immunohistochemical analysis of TRAPPC5 staining in human lung cancer formalin fixed paraffin embedded tissue section.



Western blot analysis of TRAPPC5 expression in A549(A), NIH-3T3(B), H9C2(C) whole cell lysates.

**Anti-TRAPPC5 Antibody - Background**

Trafficking protein particle complex subunit 5

**Name** TRAPPC5

play a role in vesicular transport from endoplasmic reticulum to Golgi.

**Function**

May play a role in vesicular transport from endoplasmic reticulum to Golgi.

**Cellular Location**

Golgi apparatus, cis-Golgi network.  
Endoplasmic reticulum

**Anti-TRAPPC5 Antibody - Protocols**

Provided below are standard protocols that you may find useful for product applications.

- [Western Blot](#)
- [Blocking Peptides](#)
- [Dot Blot](#)
- [Immunohistochemistry](#)
- [Immunofluorescence](#)
- [Immunoprecipitation](#)
- [Flow Cytometry](#)
- [Cell Culture](#)