

USP3 Antibody
Rabbit Polyclonal Antibody
Catalog # ABV11135

Specification

USP3 Antibody - Product Information

Application	WB
Primary Accession	Q9Y6I4
Reactivity	Human, Mouse, Rat
Host	Rabbit
Clonality	Polyclonal
Isotype	Rabbit IgG
Calculated MW	58897

USP3 Antibody - Additional Information

Gene ID 9960

Positive Control	Western Blot: Various cell lysates
Application & Usage	Western blot: 1:500 - 1:1000 dilution. However, the optimal conditions should be determined individually.

Other Names

USP3, MGC129878, MGC129879, SIH003, UBP

Target/Specificity

USP3

Antibody Form

Liquid

Appearance

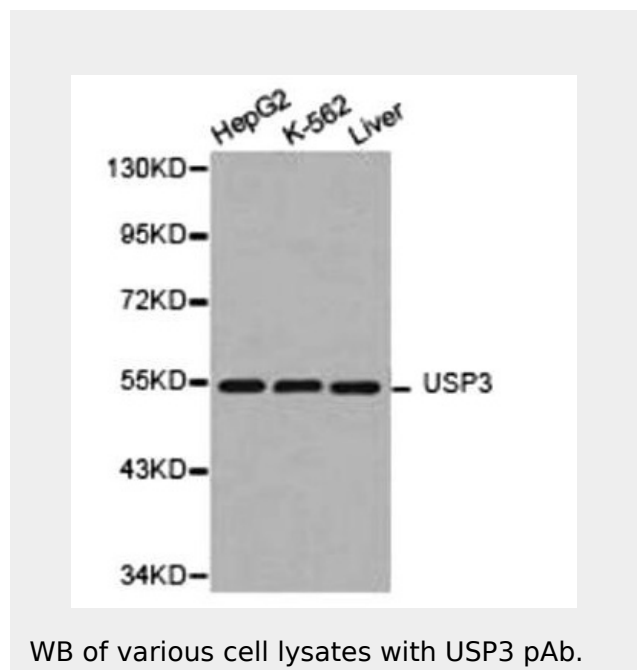
Colorless liquid

Formulation

100 µg of antibody in 100 µl PBS containing 0.02% sodium azide, 50% glycerol, pH 7.3

Handling

The antibody solution should be gently mixed before use.



USP3 Antibody - Background

Ubiquitinating enzymes (UBEs) catalyze protein ubiquitination, a reversible process countered by deubiquitinating enzymes (DUB) action. There are five DUB subfamilies including the USP, UCH, OTU, MJD, and JAMM enzymes. USP3 (ubiquitin specific peptidase 3), also known as UBP or SIH003, is a 520 amino acid protein that contains one UBPType zinc finger and belongs to the peptidase C19 family. Expressed ubiquitously with highest levels present in pancreas, USP3 catalyzes the conversion of a ubiquitin Cterminal thioester to a free ubiquitin and a thiol. The gene encoding USP3 maps to human chromosome 15, which houses over 700 genes and comprises nearly 3% of the human genome.

Reconstitution & Storage

-20 °C

Background Descriptions**Precautions**

USP3 Antibody is for research use only and not for use in diagnostic or therapeutic procedures.

USP3 Antibody - Protein Information

Name USP3

Function

Hydrolase that deubiquitinates monoubiquitinated target proteins such as histone H2A and H2B. Required for proper progression through S phase and subsequent mitotic entry. May regulate the DNA damage response (DDR) checkpoint through deubiquitination of H2A at DNA damage sites. Associates with the chromatin.

Cellular Location

Nucleus. Note=Localizes preferentially with monoubiquitinated H2A to chromatin

Tissue Location

Expressed in all tissues examined, with strongest expression in pancreas

USP3 Antibody - Protocols

Provided below are standard protocols that you may find useful for product applications.

- [Western Blot](#)
- [Blocking Peptides](#)
- [Dot Blot](#)
- [Immunohistochemistry](#)
- [Immunofluorescence](#)
- [Immunoprecipitation](#)
- [Flow Cytometry](#)
- [Cell Culture](#)