

BRD8 Antibody
Rabbit Polyclonal Antibody
Catalog # ABV10375

Specification

BRD8 Antibody - Product Information

| | |
|-------------------|--------------------------|
| Application | WB |
| Primary Accession | Q5TLG7 |
| Reactivity | Human, Mouse, Rat |
| Host | Rabbit |
| Clonality | Polyclonal |
| Isotype | Rabbit IgG |

BRD8 Antibody - Additional Information

| | |
|---------------------|--|
| Application & Usage | Western blotting (1-4 µg/ml). However, the optimal conditions should be determined individually. The antibody detects BRD8 in Human, mouse and rat samples. |
|---------------------|--|

Other Names

Bromodomain-containing protein 8, SMAP, SMAP2, Skeletal muscle abundant protein, Skeletal muscle abundant protein 2, p120, thyroid receptor coactivating protein 120 kDa, TrCP120.

Target/Specificity

BRD8

Antibody Form

Liquid

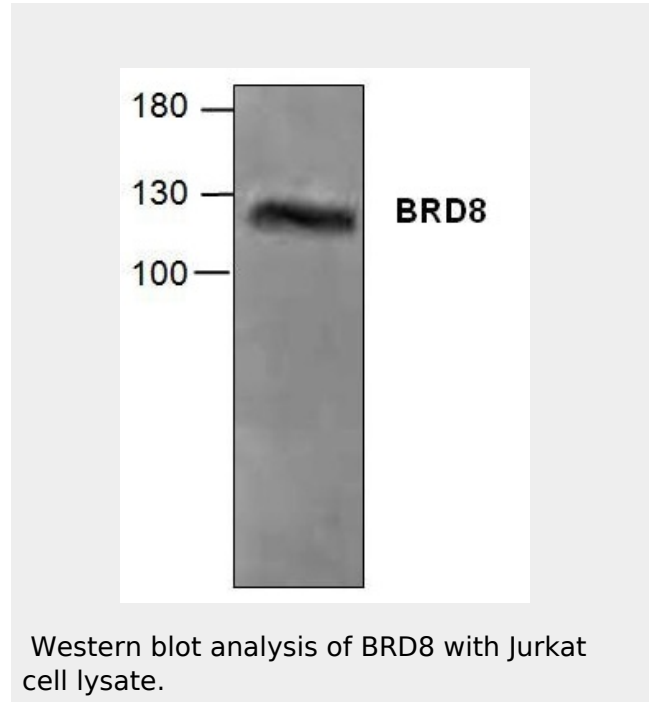
Appearance

Colorless liquid

Formulation

100 µg (0.5 mg/ml) affinity purified rabbit anti- BRD8 polyclonal antibody in phosphate buffered saline (PBS), pH 7.2, containing 30% glycerol, 0.5% BSA, 5 mM EDTA and 0.01% thimerosal.

Handling



BRD8 Antibody - Background

BRD8 interacts with thyroid hormone receptor in a ligand-dependent manner and enhances thyroid hormone-dependent activation from thyroid response elements. BRD8 contains a bromodomain and is thought to be a nuclear receptor coactivator. Three alternatively spliced BRD8 transcript variants that encode distinct BRD8 isoforms have been identified.

The antibody solution should be gently mixed before use.

Reconstitution & Storage

-20 °C

Background Descriptions**Precautions**

BRD8 Antibody is for research use only and not for use in diagnostic or therapeutic procedures.

BRD8 Antibody - Protein Information**BRD8 Antibody - Protocols**

Provided below are standard protocols that you may find useful for product applications.

- [Western Blot](#)
- [Blocking Peptides](#)
- [Dot Blot](#)
- [Immunohistochemistry](#)
- [Immunofluorescence](#)
- [Immunoprecipitation](#)
- [Flow Cytometry](#)
- [Cell Culture](#)