

**Anti-Growth Hormone Antibody**  
Catalog # ABO12708

**Specification**

**Anti-Growth Hormone Antibody - Product Information**

Application **WB, IHC**  
Primary Accession [P01241](#)  
Host **Rabbit**  
Reactivity **Human**  
Clonality **Polyclonal**  
Format **Lyophilized**

**Description**

Rabbit IgG polyclonal antibody for Somatotropin(GH1) detection. Tested with WB, IHC-P, ELISA in Human.

**Reconstitution**

Add 0.2ml of distilled water will yield a concentration of 500ug/ml.

**Anti-Growth Hormone Antibody - Additional Information**

**Gene ID 2688**

**Other Names**

Somatotropin, Growth hormone, GH, GH-N, Growth hormone 1, Pituitary growth hormone, GH1

**Calculated MW**

24847 MW KDa

**Application Details**

ELISA , 0.1-0.5 µg/ml, Human, -<br>Immunohistochemistry(Paraffin-embedded Section), 0.5-1 µg/ml, Human, By Heat<br>Western blot, 0.1-0.5 µg/ml, Human<br>

**Subcellular Localization**

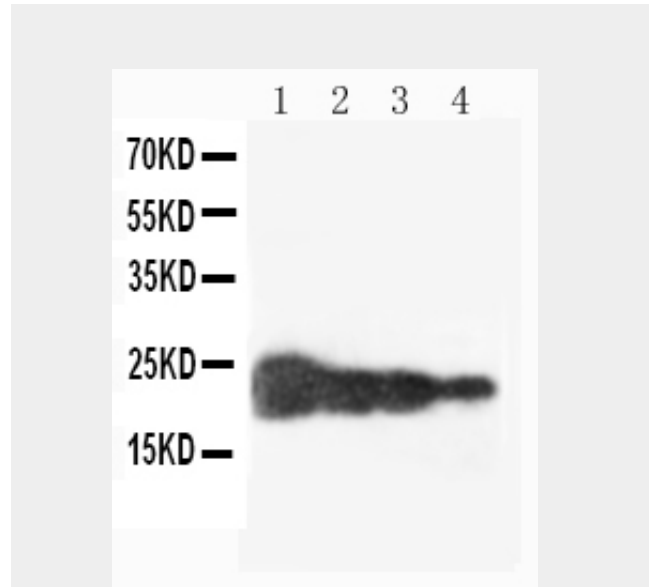
Secreted.

**Protein Name**

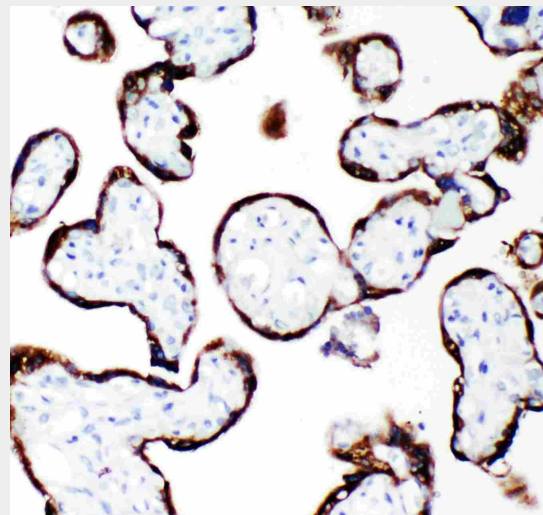
Somatotropin

**Contents**

Each vial contains 0.9mg NaCl, 0.2mg Na2HPO4, 0.05mg NaN3. Carrier free (No



Anti-human Growth Hormone antibody, ABO12708, Western blotting Lane 1: Recombinant Human GH Protein 10ng Lane 2: Recombinant Human GH Protein 5ng Lane 3: Recombinant Human GH Protein 2



Anti-human Growth Hormone antibody, ABO12708, IHC(P)IHC(P): Human Placenta Tissue

**Anti-Growth Hormone Antibody - Background**

BSA) form available in stock. If you want this antibody carrier free please specify "Carrier Free" or "No BSA" in your order note. "

**Immunogen**

E. coli-derived human GH recombinant protein(Position: F27-F217).

**Purification**

Immunogen affinity purified.

**Cross Reactivity**

No cross reactivity with other proteins

**Storage**

**At -20°C for one year. After reconstitution, at 4°C for one month. It can also be aliquotted and stored frozen at -20°C for a longer time. Avoid repeated freezing and thawing.**

**Sequence Similarities**

Belongs to the somatotropin/prolactin family.

**Anti-Growth Hormone Antibody - Protein Information****Name GH1****Function**

Plays an important role in growth control. Its major role in stimulating body growth is to stimulate the liver and other tissues to secrete IGF-1. It stimulates both the differentiation and proliferation of myoblasts. It also stimulates amino acid uptake and protein synthesis in muscle and other tissues.

**Cellular Location**

Secreted.

Growth Hormone(GH) is mapped to 17q22-q24. Growth hormone(GH) is synthesized by acidophilic or somatotrophic cells of the anterior pituitary gland. Human growth hormone has a molecular mass of 22,005 and contains 191 amino acid residues with 2 disulfide bridges. It binds two receptor molecules and thereby induces signal transduction through receptor dimerization. At high concentrations, GH acts as an antagonist because of a large difference in affinities at the respective binding sites.

**Anti-Growth Hormone Antibody - Protocols**

Provided below are standard protocols that you may find useful for product applications.

- [Western Blot](#)

- [Blocking Peptides](#)
- [Dot Blot](#)
- [Immunohistochemistry](#)
- [Immunofluorescence](#)
- [Immunoprecipitation](#)
- [Flow Cytometry](#)
- [Cell Culture](#)