

Anti-ICA1 Picoband Antibody
 Catalog # ABO12183

Specification

Anti-ICA1 Picoband Antibody - Product Information

Application	WB
Primary Accession	Q05084
Host	Rabbit
Reactivity	Human, Mouse, Rat
Clonality	Polyclonal
Format	Lyophilized

Description

Rabbit IgG polyclonal antibody for Islet cell autoantigen 1(ICA1) detection. Tested with WB in Human;Mouse;Rat.

Reconstitution

Add 0.2ml of distilled water will yield a concentration of 500ug/ml.

Anti-ICA1 Picoband Antibody - Additional Information

Gene ID 3382

Other Names

Islet cell autoantigen 1, 69 kDa islet cell autoantigen, ICA69, Islet cell autoantigen p69, ICAp69, p69, ICA1

Calculated MW

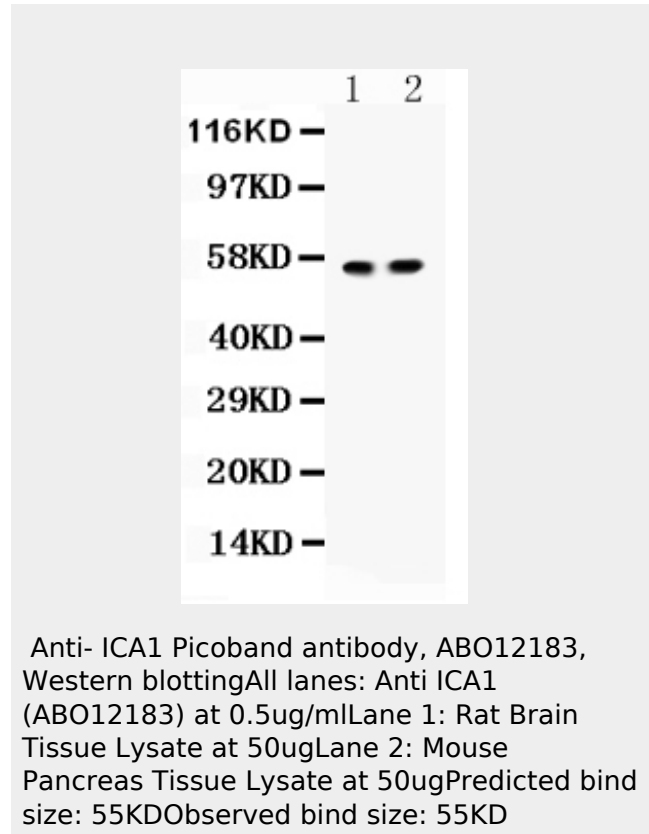
54645 MW KDa

Application Details

Western blot, 0.1-0.5 µg/ml, Mouse, Rat, Human

Subcellular Localization

Cytoplasm, cytosol . Golgi apparatus membrane ; Peripheral membrane protein . Cytoplasmic vesicle, secretory vesicle membrane ; Peripheral membrane protein . Cytoplasmic vesicle, secretory vesicle, synaptic vesicle membrane ; Peripheral membrane protein . Predominantly cytosolic. Also exists as a membrane-bound form which has been found associated with synaptic vesicles and also with the Golgi



Anti-ICA1 Picoband Antibody - Background

Islet cell autoantigen 1 is a protein that in humans is encoded by the ICA1 gene. It is mapped to 7p22. This gene encodes a protein with an arfaptin homology domain that is found both in the cytosol and as membrane-bound form on the Golgi complex and immature secretory granules. What's more, this protein is believed to be an autoantigen in insulin-dependent diabetes mellitus and primary Sjogren's syndrome. Several transcript variants encoding two different isoforms have been found for this gene.

complex and immature secretory granules.

Tissue Specificity

Expressed abundantly in pancreas, heart and brain with low levels of expression in lung, kidney, liver and thyroid.

Protein Name

Islet cell autoantigen 1

Contents

Each vial contains 5mg BSA, 0.9mg NaCl, 0.2mg Na₂HPO₄, 0.05mg NaN₃.

Immunogen

A synthetic peptide corresponding to a sequence in the middle region of human ICA1 (243-276aa EKTSH^rTMAAIHESFKGYQPYEFTTLKSLQDPMKK), identical to the related mouse and rat sequences.

Purification

Immunogen affinity purified.

Cross Reactivity

No cross reactivity with other proteins

Storage

At -20°C for one year. After r^o Constitution, at 4°C for one month. It^o Can also be aliquotted and stored frozen at -20°C for a longer time. Avoid repeated freezing and thawing.

Anti-ICA1 Picoband Antibody - Protein Information

Name ICA1

Function

May play a role in neurotransmitter secretion.

Cellular Location

Cytoplasm, cytosol. Golgi apparatus membrane; Peripheral membrane protein. Cytoplasmic vesicle, secretory vesicle membrane; Peripheral membrane protein. Cytoplasmic vesicle, secretory vesicle, synaptic vesicle membrane; Peripheral membrane protein. Note=Predominantly

cytosolic. Also exists as a membrane-bound form which has been found associated with synaptic vesicles and also with the Golgi complex and immature secretory granules

Tissue Location

Expressed abundantly in pancreas, heart and brain with low levels of expression in lung, kidney, liver and thyroid

Anti-ICA1 Picoband Antibody - Protocols

Provided below are standard protocols that you may find useful for product applications.

- [Western Blot](#)
- [Blocking Peptides](#)
- [Dot Blot](#)
- [Immunohistochemistry](#)
- [Immunofluorescence](#)
- [Immunoprecipitation](#)
- [Flow Cytometry](#)
- [Cell Culture](#)