

Anti-Syndecan 3/SDC3 Antibody
Catalog # **ABO11441****Specification****Anti-Syndecan 3/SDC3 Antibody - Product Information**

Application **IHC, WB**
Primary Accession [O64519](#)
Host **Rabbit**
Reactivity **Human, Mouse, Rat**
Clonality **Polyclonal**
Format **Lyophilized**

Description

Rabbit IgG polyclonal antibody for Syndecan-3(SDC3) detection. Tested with WB, IHC-P in Human;Mouse;Rat.

Reconstitution

Add 0.2ml of distilled water will yield a concentration of 500ug/ml.

Anti-Syndecan 3/SDC3 Antibody - Additional Information

Gene ID 20970

Other Names

Syndecan-3, SYND3, Sdc3, Kiaa0468

Calculated MW

46002 MW KDa

Application Details

Immunohistochemistry(Paraffin-embedded Section), 0.5-1 µg/ml, Human, Rat, Mouse, By Heat
Western blot, 0.1-0.5 µg/ml, Human, Rat, Mouse

Subcellular Localization

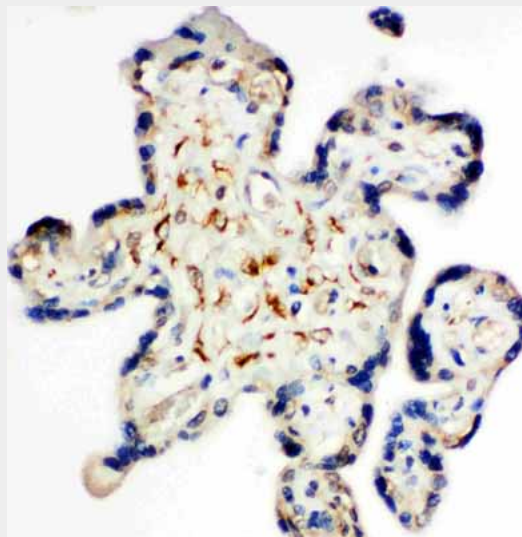
Membrane; Single-pass type I membrane protein.

Protein Name

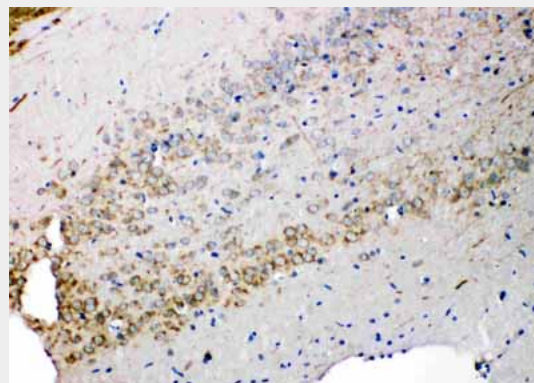
Syndecan-3

Contents

Each vial contains 5mg BSA, 0.9mg NaCl, 0.2mg Na₂HPO₄, 0.05mg Thimerosal, 0.05mg NaN₃.



Anti-Syndecan 3/SDC3 antibody, ABO11441, IHC(P)IHC(P): Human Placenta Tissue



Anti-Syndecan 3/SDC3 antibody, ABO11441, IHC(P)IHC(P): Rat Brain Tissue

Immunogen

A synthetic peptide corresponding to a sequence at the N-terminus of mouse Syndecan 3/SDC3 (45-60aa AQRWRNENFERPVDLE), identical to the related rat sequence, and different from the related human sequence by one amino acid.

Purification

Immunogen affinity purified.

Cross Reactivity

No cross reactivity with other proteins

Storage

At -20°C for one year. After r^oConstitution, at 4°C for one month. It^oCan also be aliquotted and stored frozen at -20°C for a longer time.Avoid repeated freezing and thawing.

Anti-Syndecan 3/SDC3 Antibody - Protein Information

Name Sdc3

Synonyms Kiaa0468

Function

Cell surface proteoglycan that may bear heparan sulfate. May have a role in the organization of cell shape by affecting the actin cytoskeleton, possibly by transferring signals from the cell surface in a sugar-dependent mechanism (By similarity).

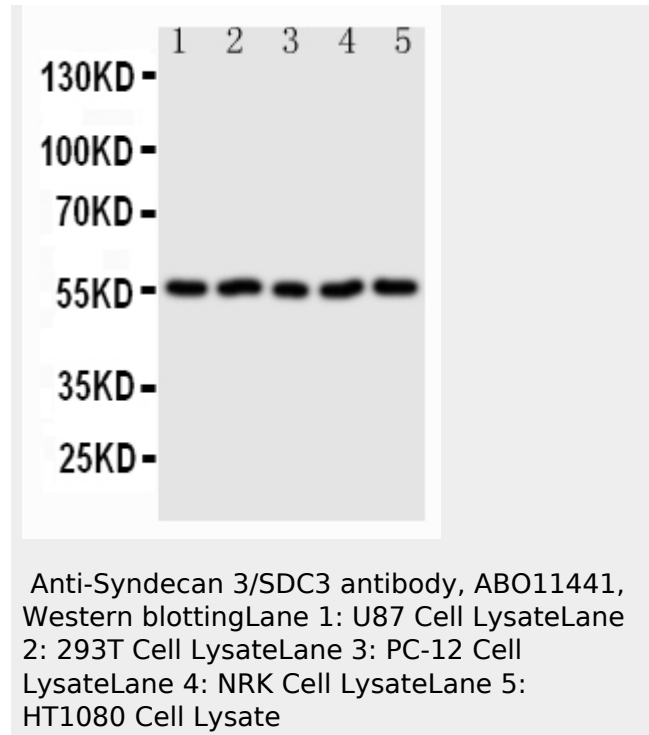
Cellular Location

Cell membrane; Single-pass type I membrane protein

Anti-Syndecan 3/SDC3 Antibody - Protocols

Provided below are standard protocols that you may find useful for product applications.

- [Western Blot](#)
- [Blocking Peptides](#)

**Anti-Syndecan 3/SDC3 Antibody - Background**

Syndecan-3, also called SYND3 is a protein that in humans is encoded by the SDC3 gene. This gene was assigned to human chromosome 1p35.2. This gene can function as in trans HIV receptors via binding of HIV-1 gp120 to the syndecan heparin sulfate chains. It may play a role in the organization of cell shape by affecting the actin cytoskeleton, and possibly by transferring signals from the cell surface in a sugar-dependent mechanism. In wildtype mice, SDC3 was expressed in hypothalamic regions that control energy balance. It was proposed that oscillation of hypothalamic SDC3 levels physiologically modulates feeding behavior.

- [Dot Blot](#)
- [Immunohistochemistry](#)
- [Immunofluorescence](#)
- [Immunoprecipitation](#)
- [Flow Cytometry](#)
- [Cell Culture](#)