

Anti-MEKK3 Antibody
Catalog # **ABO11228****Specification****Anti-MEKK3 Antibody - Product Information**

Application **IHC, WB**
Primary Accession [O61084](#)
Host **Rabbit**
Reactivity **Mouse, Rat**
Clonality **Polyclonal**
Format **Lyophilized**

Description

Rabbit IgG polyclonal antibody for Mitogen-activated protein kinase kinase 3(MAP3K3) detection. Tested with WB, IHC-P in Mouse;Rat.

Reconstitution

Add 0.2ml of distilled water will yield a concentration of 500ug/ml.

Anti-MEKK3 Antibody - Additional Information

Gene ID 26406

Other Names

Mitogen-activated protein kinase kinase 3, 2.7.11.25, MAPK/ERK kinase kinase 3, MEK kinase 3, MEKK 3, Map3k3, Mekk3

Calculated MW

70776 MW KDa

Application Details

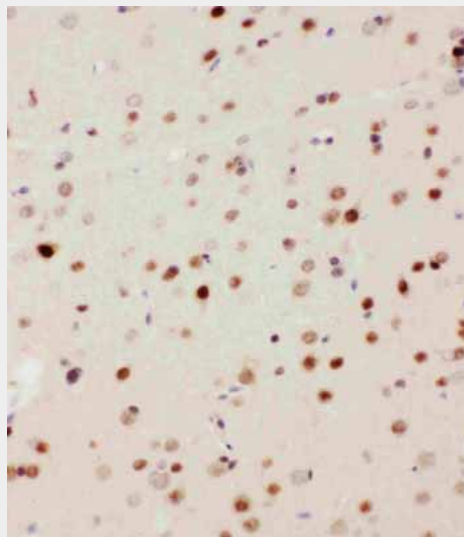
Immunohistochemistry(Paraffin-embedded Section), 0.5-1 µg/ml, Rat, Mouse, By Heat
Western blot, 0.1-0.5 µg/ml, Mouse, Rat

Protein Name

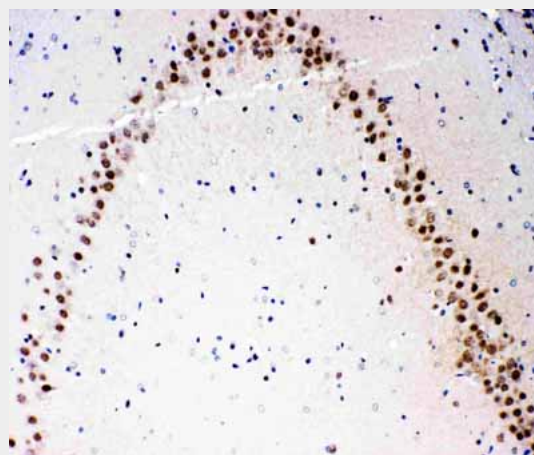
Mitogen-activated protein kinase kinase 3

Contents

Each vial contains 5mg BSA, 0.9mg NaCl, 0.2mg Na₂HPO₄, 0.05mg Thimerosal, 0.05mg NaN₃.

Immunogen

Anti-MEKK3 antibody, ABO11228,
IHC(P)IHC(P): Rat Brain Tissue



Anti-MEKK3 antibody, ABO11228,
IHC(P)IHC(P): Rat Brain Tissue

A synthetic peptide corresponding to a sequence at the N-terminus of mouse MEKK3(11-25aa MKDLVALQMSRRTRL), different from the related rat sequence by two amino acids.

Purification

Immunogen affinity purified.

Cross Reactivity

No cross reactivity with other proteins

Storage

At -20°C for one year. After reconstitution, at 4°C for one month. It can also be aliquotted and stored frozen at -20°C for a longer time. Avoid repeated freezing and thawing.

Sequence Similarities

Belongs to the protein kinase superfamily. STE Ser/Thr protein kinase family. MAP kinase kinase kinase subfamily.

Anti-MEKK3 Antibody - Protein Information

Name Map3k3

Synonyms Mekk3

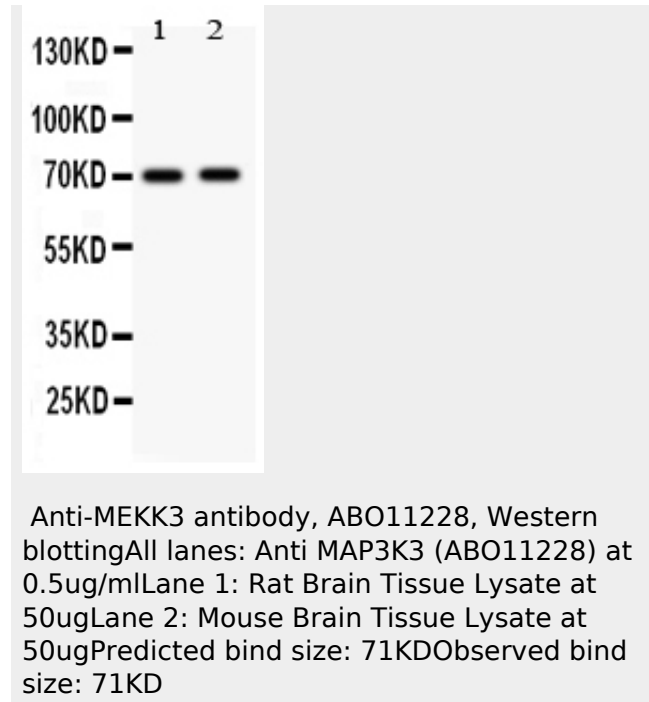
Function

Component of a protein kinase signal transduction cascade. Mediates activation of the NF-kappa-B, AP1 and DDIT3 transcriptional regulators.

Anti-MEKK3 Antibody - Protocols

Provided below are standard protocols that you may find useful for product applications.

- [Western Blot](#)
- [Blocking Peptides](#)
- [Dot Blot](#)
- [Immunohistochemistry](#)
- [Immunofluorescence](#)
- [Immunoprecipitation](#)
- [Flow Cytometry](#)
- [Cell Culture](#)



Anti-MEKK3 Antibody - Background

MAP3K3(Mitogen-activated protein kinase kinase kinase 3), also known as MAP/ERK KINASE KINASE 3, MEKK3 or MAPKKK3, is an enzyme that in humans is encoded by the MAP3K3 gene. MAP3K3 is contiguously distal to LYK5 on chromosome 17(Puffenberger et al., 2007). By yeast 2-hybrid analysis of a mouse T-cell cDNA library, Uhlik et al.(2003) showed that a C-terminal fragment of mouse Osm(CCM2) interacted with Mekk3, which activates p38 in response to sorbitol-induced hyperosmotic conditions. Mekk3 and Osm colocalized in the cytoplasmic compartment of cotransfected cells, and the Mekk3-Osm complex was recruited to Rac1 and cytoskeletal actin-containing membrane ruffles in response to sorbitol treatment. Protein interaction assays showed that Osm interacted directly with the Mekk3 substrate Mkk3(MAP2K3), with actin, and with both GDP- and GTP-loaded Rac1. Uhlik et al.(2003) concluded that the RAC1-OSM-MEKK3-MKK3 complex is required for regulation of p38 activity in response to osmotic shock.