

Anti-Kallistatin/Serpina4 Antibody
Catalog # ABO10952**Specification****Anti-Kallistatin/Serpina4 Antibody - Product Information**

Application	IHC, WB
Primary Accession	P29622
Host	Rabbit
Reactivity	Human
Clonality	Polyclonal
Format	Lyophilized

Description

Rabbit IgG polyclonal antibody for Kallistatin(SERPINA4) detection. Tested with WB, IHC-P in Human.

Reconstitution

Add 0.2ml of distilled water will yield a concentration of 500ug/ml.

Anti-Kallistatin/Serpina4 Antibody - Additional Information

Gene ID 5267

Other Names

Kallistatin, Kallikrein inhibitor, Peptidase inhibitor 4, PI-4, Serpin A4, SERPINA4, KST, PI4

Calculated MW

48542 MW KDa

Application Details

Immunohistochemistry(Paraffin-embedded Section), 0.5-1 µg/ml, Human, By Heat
Western blot, 0.1-0.5 µg/ml, Human

Subcellular Localization

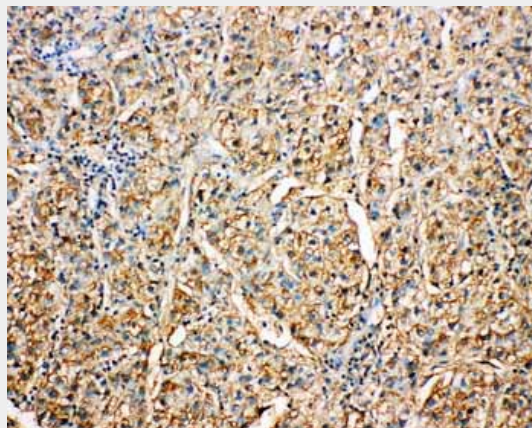
Secreted.

Tissue Specificity

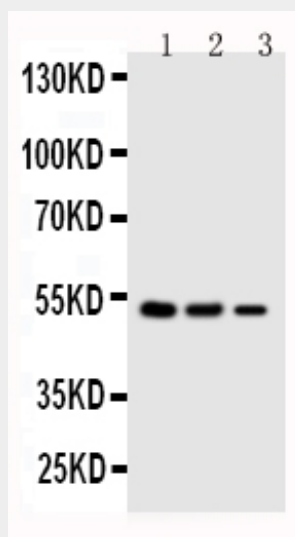
Expressed by the liver and secreted in plasma.

Protein Name

Kallistatin



Anti-Kallistatin antibody, ABO10952, IHC(P)IHC(P): Human Liver Cancer Tissue



Anti-Kallistatin antibody, ABO10952, Western blottingLane 1: SMMC Cell LysateLane 2: COLO320 Cell LysateLane 3: JURKAT Cell Lysate

Contents

Each vial contains 5mg BSA, 0.9mg NaCl, 0.2mg Na₂HPO₄, 0.05mg Thimerosal, 0.05mg NaN₃.

Immunogen

A synthetic peptide corresponding to a sequence at the C-terminus of human Kallistatin(384-401aa AIKFFSAQTNRHILRFNR).

Purification

Immunogen affinity purified.

Cross Reactivity

No cross reactivity with other proteins

Storage

At -20°C for one year. After r°Constitution, at 4°C for one month. It°Can also be aliquotted and stored frozen at -20°C for a longer time.Avoid repeated freezing and thawing.

Sequence Similarities

Belongs to the serpin family.

Anti-Kallistatin/Serpina4 Antibody - Protein Information

Name SERPINA4

Synonyms KST, PI4

Function

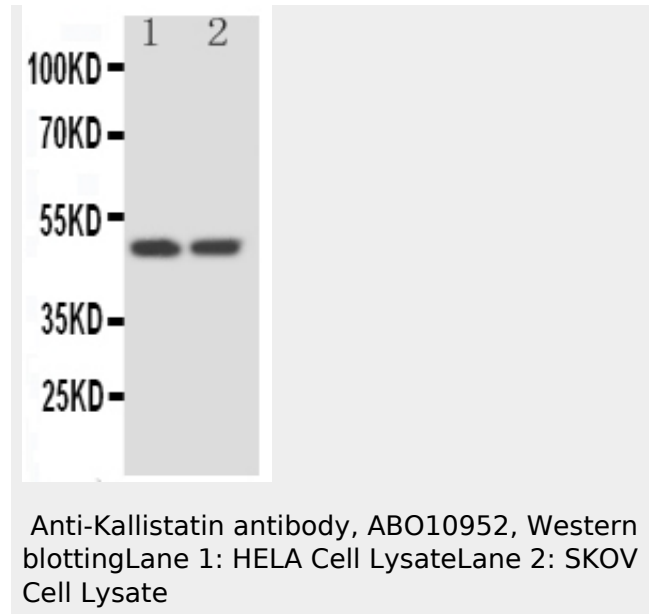
Inhibits human amidolytic and kininogenase activities of tissue kallikrein. Inhibition is achieved by formation of an equimolar, heat- and SDS-stable complex between the inhibitor and the enzyme, and generation of a small C-terminal fragment of the inhibitor due to cleavage at the reactive site by tissue kallikrein.

Cellular Location

Secreted.

Tissue Location

Expressed by the liver and secreted in plasma.



Anti-Kallistatin/Serpina4 Antibody - Background

Serpina 4, also called Kallistatin, PI4 or TISSUE KALLIKREIN INHIBITOR, is a protein that in humans is encoded by the SERPINA4 gene. The serpina4 is a member of the serpin superfamily and represents a major inhibitor of human tissue kallikrein in the circulation. The SERPINA4 gene is localized to 14q32.13. The translated amino acid sequence of serpina4 matches the protein sequence and shares 44 to 46% sequence identity with other serpin family members. Kallistatin is a serine proteinase inhibitor (serpin) and a heparin-binding protein. It is localized in vascular smooth muscle cells and endothelial cells of blood vessels, suggesting that it may be involved in the regulation of vascular function. And serpina4 also plays a role in neointima hyperplasia.

Anti-Kallistatin/Serpina4 Antibody - Protocols

Provided below are standard protocols that you may find useful for product applications.

- [Western Blot](#)
- [Blocking Peptides](#)
- [Dot Blot](#)
- [Immunohistochemistry](#)
- [Immunofluorescence](#)
- [Immunoprecipitation](#)
- [Flow Cytometry](#)
- [Cell Culture](#)