

Anti-IL2RB Antibody Catalog # ABO10929

Specification

Anti-IL2RB Antibody - Product Information

Application	WB
Primary Accession	P14784
Host	Rabbit
Reactivity	Human
Clonality	Polyclonal
Format	Lyophilized

Description

Rabbit IgG polyclonal antibody for Interleukin-2 receptor subunit beta(IL2RB) detection. Tested with WB in Human.

Reconstitution

Add 0.2ml of distilled water will yield a concentration of 500ug/ml.

Anti-IL2RB Antibody - Additional Information

Gene ID 3560

Other Names

Interleukin-2 receptor subunit beta, IL-2 receptor subunit beta, IL-2R subunit beta, IL-2RB, High affinity IL-2 receptor subunit beta, p70-75, p75, CD122, IL2RB

Calculated MW

61117 MW KDa

Application Details

Western blot, 0.1-0.5 µg/ml, Human

Subcellular Localization

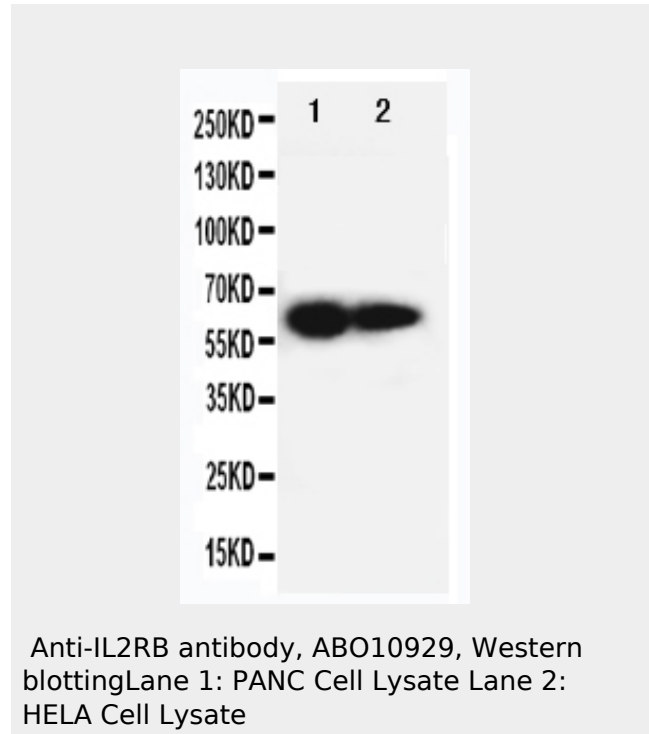
Membrane; Single-pass type I membrane protein.

Protein Name

Interleukin-2 receptor subunit beta(IL-2 receptor subunit beta/IL-2R subunit beta/IL-2RB)

Contents

Each vial contains 5mg BSA, 0.9mg NaCl, 0.2mg Na₂HPO₄, 0.05mg Thimerosal, 0.05mg NaN₃.



Anti-IL2RB Antibody - Background

IL2RB (INTERLEUKIN 2 RECEPTOR, BETA), also called CD122, is a protein that in humans is encoded by the IL2RB gene. The gene represents the beta subunit and is a type I membrane protein. IL2RB is mapped to 22q12.3. The IL2RB gene contains 10 exons spanning about 24.3 kb and that the gene product is encoded by exons 2-10. The IL2 receptor is present in 3 forms with respect to binding ability to IL2: high, intermediate, and low affinity forms. Analysis of mutants of the beta chain of the IL2 receptor reveals that the granulocyte and monocyte differentiation signals are triggered by different cytoplasmic domains, showing that the signaling pathways responsible for these unique developmental outcomes are separable.

Immunogen

A synthetic peptide corresponding to a sequence in the middle region of human IL2RB (117-135aa RVMAIQDFKPFENLRMAP).

Purification

Immunogen affinity purified.

Cross Reactivity

No cross reactivity with other proteins

Storage

At -20°C for one year. After reconstitution, at 4°C for one month. It can also be aliquotted and stored frozen at -20°C for a longer time. Avoid repeated freezing and thawing.

Sequence Similarities

Belongs to the type I cytokine receptor family. Type 4 subfamily.

Anti-IL2RB Antibody - Protein Information

Name IL2RB ([HGNC:6009](#))

Function

Receptor for interleukin-2. This beta subunit is involved in receptor mediated endocytosis and transduces the mitogenic signals of IL2. Probably in association with IL15RA, involved in the stimulation of neutrophil phagocytosis by IL15 (PubMed:<http://www.uniprot.org/citations/15123770> target="_blank">15123770, PubMed:<http://www.uniprot.org/citations/31040185> target="_blank">31040185).

Cellular Location

Cell membrane; Single-pass type I membrane protein

Anti-IL2RB Antibody - Protocols

Provided below are standard protocols that you may find useful for product applications.

- [Western Blot](#)
- [Blocking Peptides](#)
- [Dot Blot](#)
- [Immunohistochemistry](#)
- [Immunofluorescence](#)
- [Immunoprecipitation](#)
- [Flow Cytometry](#)
- [Cell Culture](#)