

**Anti-Bag1 Picoband Antibody**  
Catalog # ABO10248

**Specification**

**Anti-Bag1 Picoband Antibody - Product Information**

Application	<b>WB, IHC</b>
Primary Accession	<a href="#">O99933</a>
Host	<b>Rabbit</b>
Reactivity	<b>Human, Mouse, Rat</b>
Clonality	<b>Polyclonal</b>
Format	<b>Lyophilized</b>

**Description**

Rabbit IgG polyclonal antibody for BAG family molecular chaperone regulator 1(BAG1) detection. Tested with WB, IHC-P in Human;Mouse;Rat.

**Reconstitution**

Add 0.2ml of distilled water will yield a concentration of 500ug/ml.

**Anti-Bag1 Picoband Antibody - Additional Information**

**Gene ID 573**

**Other Names**

BAG family molecular chaperone regulator 1, BAG-1, Bcl-2-associated athanogene 1, BAG1, HAP

**Calculated MW**

38779 MW KDa

**Application Details**

Immunohistochemistry(Paraffin-embedded Section), 0.5-1 µg/ml, Mouse, Rat, Human, By Heat  
<br><br>Western blot, 0.1-0.5 µg/ml, Rat, Human<br>

**Subcellular Localization**

Isoform 1: Nucleus. Cytoplasm. Isoform 1 localizes predominantly to the nucleus.

**Tissue Specificity**

Isoform 4 is the most abundantly expressed isoform. It is ubiquitously expressed throughout most tissues, except the liver,

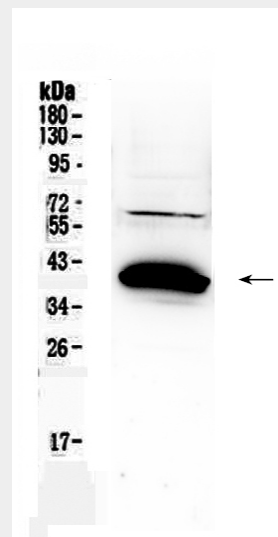


Figure 1. Western blot analysis of Bag1 using anti-Bag1 antibody (ABO10248). Electrophoresis was performed on a 5-20% SDS-PAGE gel at 70V (Stacking gel) / 90V (Resolving gel) for 2-3 hours. The sample well of each lane was loaded with 50ug of sample under reducing conditions. Lane 1: rat kidney tissue lysates. After Electrophoresis, proteins were transferred to a Nitrocellulose membrane at 150mA for 50-90 minutes. Blocked the membrane with 5% Non-fat Milk/TBS for 1.5 hour at RT. The membrane was incubated with rabbit anti-Bag1 antigen affinity purified polyclonal antibody (Catalog # ABO10248) at 0.5 µg/mL overnight at 4°C, then washed with TBS-0.1%Tween 3 times with 5 minutes each and probed with a goat anti-rabbit IgG-HRP secondary antibody at a dilution of 1:10000 for 1.5 hour at RT. The signal is developed using an Enhanced Chemiluminescent detection (ECL) kit with Tanon 5200 system. A specific band was detected for Bag1 at approximately 39KD. The expected band size for Bag1 is at 39KD.

colon, breast and uterine myometrium. Isoform 1 is expressed in the ovary and testis. Isoform 4 is expressed in several types of tumor cell lines, and at consistently high levels in leukemia and lymphoma cell lines. Isoform 1 is expressed in the prostate, breast and leukemia cell lines. Isoform 3 is the least abundant isoform in tumor cell lines (at protein level).

#### Protein Name

BAG family molecular chaperone regulator 1

#### Contents

Each vial contains 5mg BSA, 0.9mg NaCl, 0.2mg Na<sub>2</sub>HPO<sub>4</sub>, 0.05mg NaN<sub>3</sub>.

#### Immunogen

A synthetic peptide corresponding to a sequence at the C-terminus of human Bag1 (323-345aa DTVEQNICQETERLQSTNFALAE), different from the related mouse sequence by two amino acids, and from the related rat sequence by three amino acids.

#### Purification

Immunogen affinity purified.

#### Cross Reactivity

No cross reactivity with other proteins

#### Storage

**At -20°C for one year. After reconstitution, at 4°C for one month. It can also be aliquotted and stored frozen at -20°C for a longer time. Avoid repeated freezing and thawing.**

#### Anti-Bag1 Picoband Antibody - Protein Information

**Name** BAG1

**Synonyms** HAP

#### Function

Co-chaperone for HSP70 and HSC70 chaperone proteins. Acts as a nucleotide-exchange factor (NEF) promoting the release of ADP from the HSP70 and HSC70 proteins thereby triggering

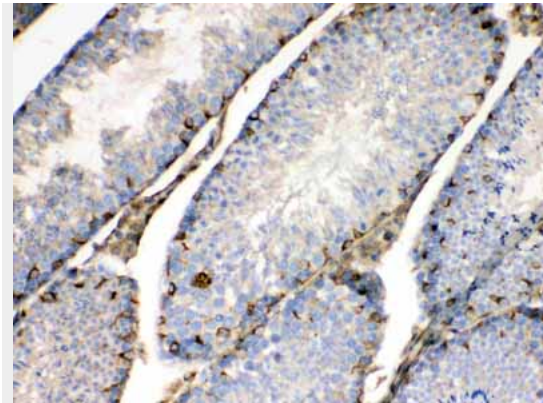


Figure 2. IHC analysis of Bag1 using anti-Bag1 antibody (ABO10248). Bag1 was detected in paraffin-embedded section of mouse testis tissues. Heat mediated antigen retrieval was performed in citrate buffer (pH6, epitope retrieval solution) for 20 mins. The tissue section was blocked with 10% goat serum. The tissue section was then incubated with 1½g/ml rabbit anti- Bag1 Antibody (ABO10248) overnight at 4°C. Biotinylated goat anti-rabbit IgG was used as secondary antibody and incubated for 30 minutes at 37°C. The tissue section was developed using Streptavidin-Biotin-Complex (SABC) with DAB as the chromogen.

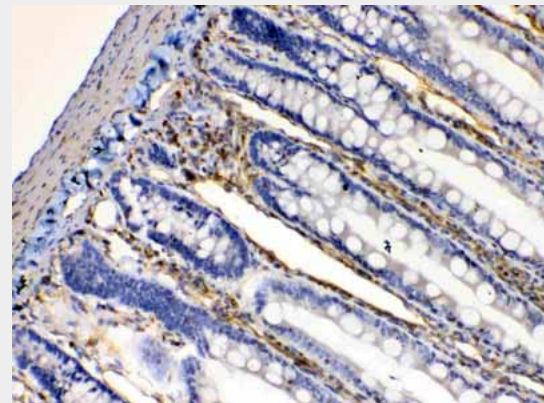


Figure 3. IHC analysis of Bag1 using anti-Bag1 antibody (ABO10248). Bag1 was detected in paraffin-embedded section of rat intestine tissues. Heat mediated antigen retrieval was performed in citrate buffer (pH6, epitope retrieval solution) for 20 mins. The tissue section was blocked with 10% goat serum. The tissue section was then incubated with 1½g/ml rabbit anti- Bag1 Antibody (ABO10248) overnight at 4°C. Biotinylated goat anti-rabbit IgG was used as secondary antibody and incubated for 30 minutes at 37°C. The tissue section was developed using Streptavidin-Biotin-Complex (SABC) with

client/substrate protein release. Nucleotide release is mediated via its binding to the nucleotide-binding domain (NBD) of HSPA8/HSC70 whereas the substrate release is mediated via its binding to the substrate-binding domain (SBD) of HSPA8/HSC70 (PubMed:<a href="http://www.uniprot.org/citations/27474739" target="\_blank">27474739</a>, PubMed:<a href="http://www.uniprot.org/citations/9873016" target="\_blank">9873016</a>, PubMed:<a href="http://www.uniprot.org/citations/24318877" target="\_blank">24318877</a>). Inhibits the pro-apoptotic function of PPP1R15A, and has anti-apoptotic activity (PubMed:<a href="http://www.uniprot.org/citations/12724406" target="\_blank">12724406</a>). Markedly increases the anti-cell death function of BCL2 induced by various stimuli (PubMed:<a href="http://www.uniprot.org/citations/9305631" target="\_blank">9305631</a>).

#### Cellular Location

[Isoform 1]: Nucleus. Cytoplasm. Note=Isoform 1 localizes predominantly to the nucleus [Isoform 4]: Cytoplasm. Nucleus. Note=Isoform 4 localizes predominantly to the cytoplasm. The cellular background in which it is expressed can influence whether it resides primarily in the cytoplasm or is also found in the nucleus. In the presence of BCL2, localizes to intracellular membranes (what appears to be the nuclear envelope and perinuclear membranes) as well as punctate cytosolic structures suggestive of mitochondria

#### Tissue Location

Isoform 4 is the most abundantly expressed isoform. It is ubiquitously expressed throughout most tissues, except the liver, colon, breast and uterine myometrium. Isoform 1 is expressed in the ovary and testis. Isoform 4 is expressed in several types of tumor cell lines, and at consistently high levels in leukemia and lymphoma cell lines. Isoform 1 is expressed in the prostate, breast and leukemia cell lines. Isoform 3 is the least abundant isoform in tumor cell lines (at protein level).

#### Anti-Bag1 Picoband Antibody - Protocols

DAB as the chromogen.

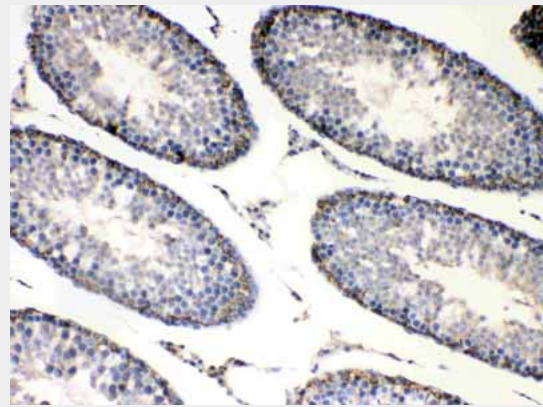


Figure 4. IHC analysis of Bag1 using anti-Bag1 antibody (ABO10248). Bag1 was detected in paraffin-embedded section of rat testis tissues. Heat mediated antigen retrieval was performed in citrate buffer (pH6, epitope retrieval solution) for 20 mins. The tissue section was blocked with 10% goat serum. The tissue section was then incubated with 1 $\mu$ g/ml rabbit anti- Bag1 Antibody (ABO10248) overnight at 4 $^{\circ}$ C. Biotinylated goat anti-rabbit IgG was used as secondary antibody and incubated for 30 minutes at 37 $^{\circ}$ C. The tissue section was developed using Streptavidin-Biotin-Complex (SABC) with DAB as the chromogen.

#### Anti-Bag1 Picoband Antibody - Background

BAG family molecular chaperone regulator 1 (BAG1) is a protein that in humans is encoded by the BAG1 gene. Human BAG1 is mapped to chromosome 9p12, a region associated with hereditary disorders that may involve developmental dysregulation of programmed cell death. The Bag1 protein is rich in glutamic acid residues. Its deduced 274-amino acid protein has a calculated molecular mass of 31 KD. Being the BCL-2-associated athanogene, Bag1 enhances the anti-apoptotic effects of BCL2 and represents a link between growth factor receptors and anti-apoptotic mechanisms.

Provided below are standard protocols that you may find useful for product applications.

- [Western Blot](#)
- [Blocking Peptides](#)
- [Dot Blot](#)
- [Immunohistochemistry](#)
- [Immunofluorescence](#)
- [Immunoprecipitation](#)
- [Flow Cytometry](#)
- [Cell Culture](#)