

## Anti-Crp Picoband Antibody

Catalog # ABO10045

### Specification

#### Anti-Crp Picoband Antibody - Product Information

Application	<b>WB, IHC</b>
Primary Accession	<a href="#">P14847</a>
Host	<b>Rabbit</b>
Reactivity	<b>Mouse, Rat</b>
Clonality	<b>Polyclonal</b>
Format	<b>Lyophilized</b>

#### Description

Rabbit IgG polyclonal antibody for C-reactive protein(Crp) detection. Tested with WB, IHC-P, ELISA in Mouse;Rat.

#### Reconstitution

Add 0.2ml of distilled water will yield a concentration of 500ug/ml.

#### Anti-Crp Picoband Antibody - Additional Information

**Gene ID** 12944

#### Other Names

C-reactive protein, Crp, Ptx1

#### Calculated MW

25360 MW KDa

#### Application Details

Immunohistochemistry(Paraffin-embedded Section), 0.5-1 µg/ml, Mouse, Rat, By Heat  
 ELISA , 0.1-0.5 µg/ml, Mouse, -  
 Western blot, 0.1-0.5 µg/ml, Rat, Mouse

#### Subcellular Localization

Secreted.

#### Tissue Specificity

Found in plasma.

#### Protein Name

C-reactive protein

#### Contents

Each vial contains 5mg BSA, 0.9mg NaCl, 0.2mg Na<sub>2</sub>HPO<sub>4</sub>, 0.05mg NaN<sub>3</sub>.

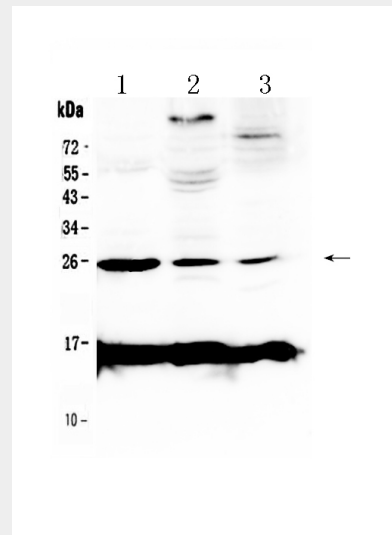


Figure 1. Western blot analysis of Crp using anti-Crp antibody (ABO10045). Electrophoresis was performed on a 5-20% SDS-PAGE gel at 70V (Stacking gel) / 90V (Resolving gel) for 2-3 hours. The sample well of each lane was loaded with 50ug of sample under reducing conditions. Lane 1: rat spleen tissue lysates, Lane 2: rat brain tissue lysates, Lane 3: rat thymus tissue lysates. After Electrophoresis, proteins were transferred to a Nitrocellulose membrane at 150mA for 50-90 minutes. Blocked the membrane with 5% Non-fat Milk/ TBS for 1.5 hour at RT. The membrane was incubated with rabbit anti-Crp antigen affinity purified polyclonal antibody (Catalog # ABO10045) at 0.5 µg/mL overnight at 4°C, then washed with TBS-0.1%Tween 3 times with 5 minutes each and probed with a goat anti-rabbit IgG-HRP secondary antibody at a dilution of 1:10000 for 1.5 hour at RT. The signal is developed using an Enhanced Chemiluminescent detection (ECL) kit with Tanon 5200 system. A specific band was detected for Crp at approximately 25KD. The expected band size for Crp is at 25KD.

### Immunogen

E. coli-derived mouse Crp recombinant protein (Position: H20-S225). Mouse Crp shares 71.9% and 72.7% amino acid (aa) sequence identity with human and rat Crp, respectively.

### Purification

Immunogen affinity purified.

### Cross Reactivity

No cross reactivity with other proteins

### Storage

**At -20°C for one year. After reconstitution, at 4°C for one month. It can also be aliquotted and stored frozen at -20°C for a longer time. Avoid repeated freezing and thawing.**

### Anti-Crp Picoband Antibody - Protein Information

**Name** Crp

**Synonyms** Ptx1

### Function

Displays several functions associated with host defense: it promotes agglutination, bacterial capsular swelling, phagocytosis and complement fixation through its calcium-dependent binding to phosphorylcholine. Can interact with DNA and histones and may scavenge nuclear material released from damaged circulating cells.

### Cellular Location

Secreted.

### Tissue Location

Found in plasma.

### Anti-Crp Picoband Antibody - Protocols

Provided below are standard protocols that you may find useful for product applications.

- [Western Blot](#)
- [Blocking Peptides](#)

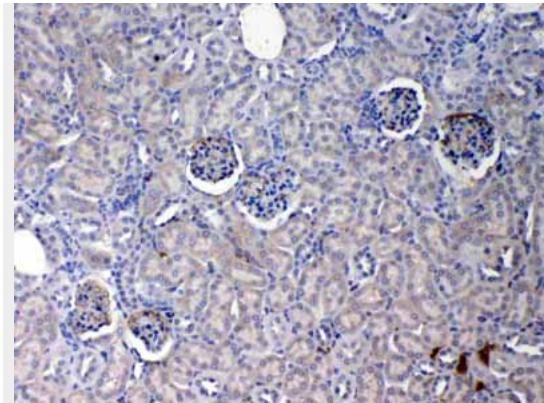


Figure 2. IHC analysis of Crp using anti- Crp antibody (ABO10045).Crp was detected in paraffin-embedded section of mouse kidney tissues. Heat mediated antigen retrieval was performed in citrate buffer (pH6, epitope retrieval solution) for 20 mins. The tissue section was blocked with 10% goat serum. The tissue section was then incubated with 1 $\mu$ g/ml rabbit anti- Crp Antibody (ABO10045) overnight at 4 $\text{^\circ}$ C. Biotinylated goat anti-rabbit IgG was used as secondary antibody and incubated for 30 minutes at 37 $\text{^\circ}$ C. The tissue section was developed using Streptavidin-Biotin-Complex (SABC) with DAB as the chromogen.

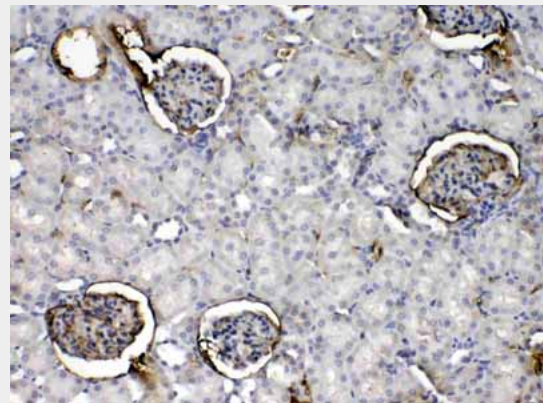


Figure 3. IHC analysis of Crp using anti- Crp antibody (ABO10045).Crp was detected in paraffin-embedded section of rat kidney tissues. Heat mediated antigen retrieval was performed in citrate buffer (pH6, epitope retrieval solution) for 20 mins. The tissue section was blocked with 10% goat serum. The tissue section was then incubated with 1 $\mu$ g/ml rabbit anti- Crp Antibody (ABO10045) overnight at 4 $\text{^\circ}$ C. Biotinylated goat anti-rabbit IgG was used as secondary antibody and incubated for 30 minutes at 37 $\text{^\circ}$ C. The tissue section was developed using Streptavidin-Biotin-Complex (SABC) with

- [Dot Blot](#)
- [Immunohistochemistry](#)
- [Immunofluorescence](#)
- [Immunoprecipitation](#)
- [Flow Cytometry](#)
- [Cell Culture](#)

DAB as the chromogen.

### **Anti-Crp Picoband Antibody - Background**

C Reactive Protein (CRP) is a major acute phase reactant synthesized primarily in the liver hepatocytes. It is composed of 5 identical, 21,500-molecular weight subunits. CRP mediates activities associated with preimmune nonspecific host resistance. CRP shows the strongest association with cardiovascular events. It is detectable on the surface of about 4% of normal peripheral blood lymphocytes. Acute phase reactant CRP is produced in the liver.