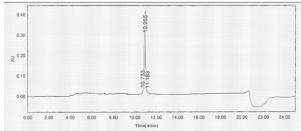


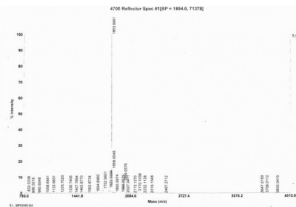
Abbexa Ltd, Innovation Centre, Cambridge Science Park, Cambridge, CB4 0EY, UK
 Telephone: +44 (0) 1223 755950 - Fax: +44 (0) 1223 755951 - E-Mail: info@abbexa.com

Human Islet Amyloid Polypeptide (IAPP) Peptide

Catalogue No.: abx654081



HPLC analysis of unconjugated IAPP.



Mass spectrometry analysis of unconjugated IAPP.

Human Islet Amyloid Polypeptide (IAPP) Protein is a synthetic Human protein.

Target: Islet Amyloid Polypeptide (IAPP)

Origin: Human

Host: Synthetic

Tested Applications: BP

Purity: > 95%

Form: Lyophilized

Reconstitution: Reconstitute in 10 mM PBS, pH 7.4, to a concentration of 0.1-1.0 mg/ml. Do not vortex.

Conjugation: Unconjugated

Storage: Store at 2-8 °C for up to one month. Store at -80 °C for up to one year. Avoid repeated freeze/thaw cycles.

Expression: Synthetic

Molecular Weight: 1854.2 Da

Abbexa Ltd, Innovation Centre, Cambridge Science Park, Cambridge, CB4 0EY, UK
Telephone: +44 (0) 1223 755950 - Fax: +44 (0) 1223 755951 - E-Mail: info@abbexa.com

Sequence Fragment: Lys34-Val50

Sequence: KCNTATC ATQRLANFLV

Buffer: Prior to lyophilization: 10 mM PBS, pH 7.4.

Note: This product is for research use only.