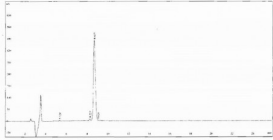
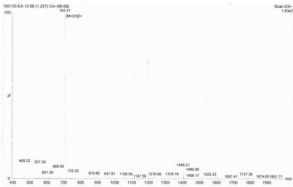


**Human Cross Linked C-Telopeptide of Type II Collagen (CTXII) Peptide**

Catalogue No.: abx651288



HPLC analysis of CTXII.



Mass spectrometry analysis of CTXII.

C-Teloprotein Of Type II Collagen Protein is a synthetic Human protein.

**Target:** C-Telopeptide Of Type II Collagen

**Origin:** Human

**Tested Applications:** ELISA

**Purity:** > 95%

**Form:** Lyophilized

**Reconstitution:** Reconstitute in 10 mM PBS (pH 7.4) to a concentration of 0.1 - 1.0 mg/ml. Do not vortex.

**Conjugation:** Unconjugated

**Storage:** Store at 2-8 °C for up to one month. Store at -80 °C for up to one year. Avoid repeated freeze/thaw cycles.

**Molecular Weight:** 1404.6 Da (Predicted)

**Sequence Fragment:** Glu1229-Ala1241

**Sequence:** EK GPDPLQYMRA

Abbexa Ltd, Innovation Centre, Cambridge Science Park, Cambridge, CB4 0EY, UK  
Telephone: +44 (0) 1223 755950 - Fax: +44 (0) 1223 755951 - E-Mail: info@abbexa.com

**Tag:** N-terminal His-tag

**Activity:** Not tested

**Concentration:** Prior to lyophilization: 200 µg/ml

**Buffer:** Prior to lyophilization: 10 mM PBS, pH 7.4.

**Note:** This product is for research use only.