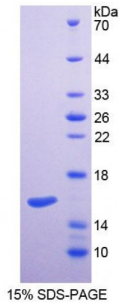


## Mouse Serine Palmitoyltransferase, Long Chain Base Subunit 2 (SPTLC2) Protein

Catalogue No.: abx650710



SDS-PAGE analysis of Mouse SPTLC2 Protein.

Mouse SPTLC2 Protein (Recombinant) is a recombinant protein from Mouse. It is produced in E. coli using Prokaryotic expression.

**Target:** Serine Palmitoyltransferase, Long Chain Base Subunit 2 (SPTLC2)

**Origin:** Mouse

**Host:** E. coli

**Tested Applications:** ELISA, WB, IP, SDS-PAGE

**Purity:** ≥ 94%

**Form:** Lyophilized

**Conjugation:** Unconjugated

**Storage:** Store at 2-8 °C for up to one month. Store at -80 °C for up to one year. Avoid repeated freeze/thaw cycles.

**Expression:** Recombinant

**Molecular Weight:** 15.9 kDa

**Swiss Prot:** [P97363](#)

**Sequence Fragment:** Glu453-Asp560

**Tag:** Two N-terminal tags, His-tag and T7-tag

**Activity:** Not tested

Abbexa Ltd, Innovation Centre, Cambridge Science Park, Cambridge, CB4 0EY, UK  
Telephone: +44 (0) 1223 755950 - Fax: +44 (0) 1223 755951 - E-Mail: info@abbexa.com

**Concentration:** Prior to lyophilization: 200 µg/ml

**Buffer:** Prior to lyophilization: PBS, pH 7.4, containing 0.01% Sarcosyl, 1 mM DTT, 5% Trehalose and Proclin-300.

**Note:** This product is for research use only.