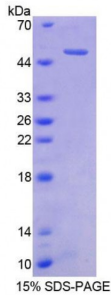


Human Cerebellin 1 (CBLN1) Protein

Catalogue No.: abx650683



SDS-PAGE analysis of Human CBLN1 Protein.

Human CBLN1 Protein (Recombinant) is a recombinant protein from Human. It is produced in E. coli using Prokaryotic expression.

Target: Cerebellin 1 (CBLN1)**Origin:** Human**Host:** E. coli**Tested Applications:** ELISA, WB, IP, SDS-PAGE**Purity:** ≥ 93%**Form:** Lyophilized**Conjugation:** Unconjugated**Storage:** Store at 2-8 °C for up to one month. Store at -80 °C for up to one year. Avoid repeated freeze/thaw cycles.**Expression:** Recombinant**Molecular Weight:** 49.0 kDa**Swiss Prot:** [P23435](#)**Sequence Fragment:** Gln22-Leu193**Tag:** Two N-terminal tags, His-tag and GST-tag**Activity:** Not tested**Concentration:** Prior to lyophilization: 200 µg/ml

Abbexa Ltd, Innovation Centre, Cambridge Science Park, Cambridge, CB4 0EY, UK
Telephone: +44 (0) 1223 755950 - Fax: +44 (0) 1223 755951 - E-Mail: info@abbexa.com

Buffer: Prior to lyophilization: PBS, pH 7.4, containing 0.01% Sarcosyl, 1 mM DTT, 5% Trehalose and Proclin-300.

Note: This product is for research use only.