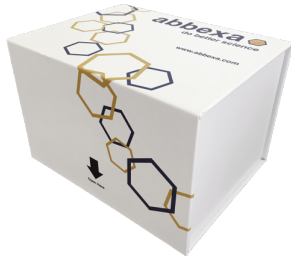


**Rat Suppressor of tumorigenicity 7 protein-like (ST7L) ELISA Kit**

Catalogue No.: abx392031



Rat St7L ELISA Kit is an ELISA Kit against St7L.

**Target:** ST7L

**Reactivity:** Rat

**Tested Applications:** ELISA

**Recommended dilutions:** Optimal dilutions/concentrations should be determined by the end user.

**Test Range:** 78 pg/ml - 5000 pg/ml

**Sensitivity:** < 46.9 pg/ml

**Validity:** The validity for this kit is 6 months.

**Storage:** Store at 2°C to 8°C upon receipt.

**Stability:** The stability of the kit is determined by the rate of activity loss. The loss rate is less than 5% within the expiration date under appropriate storage conditions. To minimize performance fluctuations, operation procedures and lab conditions should be strictly controlled. It is also strongly suggested that the whole assay is performed by the same user throughout.

**Swiss Prot:** [Q68FW3](#)

**GeneID:** [295344](#)

**Gene Symbol:** ST7L

**Ensembl:** ENSRNOG00000014002

**Standard Form:** Lyophilized

Abbexa Ltd, Innovation Centre, Cambridge Science Park, Cambridge, CB4 0EY, UK  
Telephone: +44 (0) 1223 755950 - Fax: +44 (0) 1223 755951 - E-Mail: info@abbexa.com

**ELISA Detection:** Colorimetric

**ELISA Type:** Sandwich

**ELISA Data:** Quantitative

**Sample Type:** Serum, plasma and other biological fluids.

**Note:** This product is for research use only.  
The range and sensitivity is subject to change. Please contact us for the latest product information.  
For accurate results, sample concentrations must be diluted to mid-range of the kit. If you require a specific range, please contact us in advance or write your request in your order comments.  
Please note that our ELISA and CLIA kits are optimised for detection of native samples, rather than recombinant proteins. We are unable to guarantee detection of recombinant proteins, as they may have different sequences or tertiary structures to the native protein.