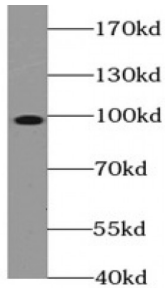


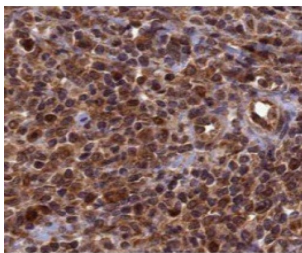
Abbexa Ltd, Innovation Centre, Cambridge Science Park, Cambridge, CB4 0EY, UK  
Telephone: +44 (0) 1223 755950 - Fax: +44 (0) 1223 755951 - E-Mail: info@abbexa.com

## Topoisomerase (DNA) I (TOP1) Antibody

Catalogue No.: abx238865



WB analysis of L02 cells, using TOP1 antibody (1/1000 dilution).



IHC analysis of paraffin-embedded human cervical cancer, using TOP1 antibody (1/50 dilution).

TOP1 Antibody is a Rabbit Polyclonal against TOP1.

<b>Target:</b>	TOP1
<b>Reactivity:</b>	Human, Mouse
<b>Host:</b>	Rabbit
<b>Clonality:</b>	Polyclonal
<b>Tested Applications:</b>	ELISA, WB, IHC, IP
<b>Recommended dilutions:</b>	WB: 1/500 - 1/2000, IHC: 1/50 - 1/200, IP: 1/50 - 1/100. Optimal dilutions/concentrations should be determined by the end user.
<b>Immunogen:</b>	topoisomerase (DNA) I
<b>Purity:</b>	> 95% (SDS-PAGE)
<b>Purification:</b>	Immunogen affinity purified.
<b>Form:</b>	Liquid
<b>Isotype:</b>	IgG

Abbexa Ltd, Innovation Centre, Cambridge Science Park, Cambridge, CB4 0EY, UK  
Telephone: +44 (0) 1223 755950 - Fax: +44 (0) 1223 755951 - E-Mail: [info@abbexa.com](mailto:info@abbexa.com)

**Conjugation:** Unconjugated

**Storage:** Store at -20°C for 24 months. Avoid repeated freeze/thaw cycles.

**Molecular Weight:** 100 kDa

**Swiss Prot:** [P11387](#)

**Buffer:** PBS, pH 7.3, with 0.02% sodium azide and 50% glycerol.

**Note:** This product is for research use only.