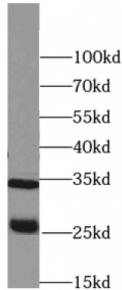


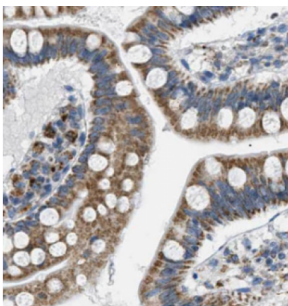
Abbexa Ltd, Innovation Centre, Cambridge Science Park, Cambridge, CB4 0EY, UK
Telephone: +44 (0) 1223 755950 - Fax: +44 (0) 1223 755951 - E-Mail: info@abbexa.com

Protease, Serine, 2 (PRSS2) Antibody

Catalogue No.: abx236833



Western blot analysis of Raji cells subjected to SDS-PAGE, using PRSS2 antibody (1/500 dilution).



Immunohistochemistry analysis of paraffin-embedded human small intestine tissue, using PRSS2 antibody (1/400 dilution).

PRSS2 Antibody is a Rabbit Polyclonal against PRSS2.

Target: PRSS2

Reactivity: Human, Mouse, Rat

Host: Rabbit

Clonality: Polyclonal

Tested Applications: ELISA, WB

Recommended dilutions: WB: 1/500 - 1/3000, IHC: 1/200 - 1/600. Optimal dilutions/concentrations should be determined by the end user.

Immunogen: Protease, serine, 2 (Trypsin 2)

Purity: > 95% (SDS-PAGE)

Purification: Immunogen affinity purified.

Form: Liquid

Isotype: IgG

Abbexa Ltd, Innovation Centre, Cambridge Science Park, Cambridge, CB4 0EY, UK
Telephone: +44 (0) 1223 755950 - Fax: +44 (0) 1223 755951 - E-Mail: info@abbexa.com

Conjugation: Unconjugated

Storage: Store at -20°C for 24 months. Avoid repeated freeze/thaw cycles.

Molecular Weight: 26 kDa, 35 kDa

Buffer: PBS with 0.02% sodium azide and 50% glycerol, pH 7.3

Note: This product is for research use only.