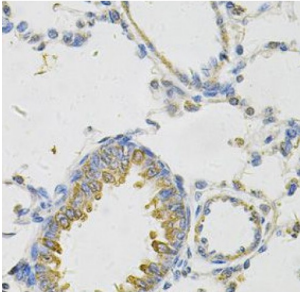


Abbexa Ltd, Innovation Centre, Cambridge Science Park, Cambridge, CB4 0EY, UK
Telephone: +44 (0) 1223 755950 - Fax: +44 (0) 1223 755951 - E-Mail: info@abbexa.com

Serum Paraoxonase/arylesterase 2 (PON2) Antibody

Catalogue No.: abx236639



IHC analysis of paraffin-embedded rat lung, using PON2 Antibody (1/100 dilution).

PON2 Antibody is a Rabbit Polyclonal against PON2.

Target:	PON2
Reactivity:	Human, Rat
Host:	Rabbit
Clonality:	Polyclonal
Tested Applications:	ELISA, WB, IHC
Recommended dilutions:	WB: 1/200 - 1/2000, IHC: 1/50 - 1/200. Optimal dilutions/concentrations should be determined by the end user.
Immunogen:	paraoxonase 2
Purity:	> 95% (SDS-PAGE)
Purification:	Immunogen affinity purified.
Form:	Liquid
Isotype:	IgG
Conjugation:	Unconjugated
Storage:	Store at -20°C for 24 months. Avoid repeated freeze/thaw cycles.
Swiss Prot:	Q15165
Buffer:	PBS, pH 7.3, with 0.02% sodium azide and 50% glycerol.

Abbexa Ltd, Innovation Centre, Cambridge Science Park, Cambridge, CB4 0EY, UK
Telephone: +44 (0) 1223 755950 - Fax: +44 (0) 1223 755951 - E-Mail: info@abbexa.com

Note: This product is for research use only.