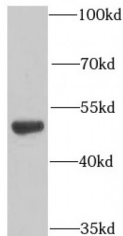
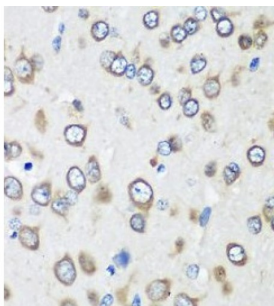


**Eukaryotic Translation Elongation Factor 1 Gamma (EEF1G) Antibody**

Catalogue No.: abx232650



WB analysis of mouse brain tissue, using EEF1G antibody (1/1000 dilution).



IHC analysis of paraffin-embedded rat brain, using EEF1G antibody (1/100 dilution).

EEF1G Antibody is a Rabbit Polyclonal against EEF1G.

**Target:** EEF1G**Reactivity:** Human, Mouse, Rat**Host:** Rabbit**Clonality:** Polyclonal**Tested Applications:** ELISA, WB, IHC**Recommended dilutions:** WB: 1/500 - 1/2000, IHC: 1/50 - 1/200. Optimal dilutions/concentrations should be determined by the end user.**Immunogen:** eukaryotic translation elongation factor 1 gamma**Purity:** > 95% (SDS-PAGE)**Purification:** Immunogen affinity purified.**Form:** Liquid**Isotype:** IgG

Abbexa Ltd, Innovation Centre, Cambridge Science Park, Cambridge, CB4 0EY, UK  
Telephone: +44 (0) 1223 755950 - Fax: +44 (0) 1223 755951 - E-Mail: [info@abbexa.com](mailto:info@abbexa.com)

**Conjugation:** Unconjugated

**Storage:** Store at -20°C for 24 months. Avoid repeated freeze/thaw cycles.

**Molecular Weight:** 50 kDa

**Swiss Prot:** [P26641](#)

**Buffer:** PBS, pH 7.3, with 0.02% sodium azide and 50% glycerol.

**Note:** This product is for research use only.