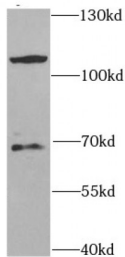
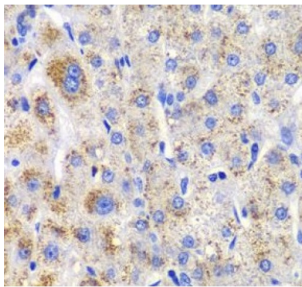


Cbl Proto-Oncogene B, E3 Ubiquitin Protein Ligase (CBLB) Antibody

Catalogue No.: abx231318



WB analysis of HEK-293 cells, using CBLB antibody (1/1000 dilution).



IHC analysis of paraffin-embedded human liver injury, using CBLB antibody (1/100 dilution).

CBLB Antibody is a Rabbit Polyclonal against CBLB.

Target: CBLB**Reactivity:** Human, Mouse**Host:** Rabbit**Clonality:** Polyclonal**Tested Applications:** ELISA, WB, IHC**Recommended dilutions:** WB: 1/500 - 1/2000, IHC: 1/50 - 1/200. Optimal dilutions/concentrations should be determined by the end user.**Immunogen:** Cas-Br-M (murine) ecotropic retroviral transforming sequence b**Purity:** > 95% (SDS-PAGE)**Purification:** Immunogen affinity purified.**Form:** Liquid**Isotype:** IgG

Abbexa Ltd, Innovation Centre, Cambridge Science Park, Cambridge, CB4 0EY, UK
Telephone: +44 (0) 1223 755950 - Fax: +44 (0) 1223 755951 - E-Mail: info@abbexa.com

Conjugation: Unconjugated

Storage: Store at -20°C for 24 months. Avoid repeated freeze/thaw cycles.

Molecular Weight: 110 kDa

Swiss Prot: [Q13191](#)

Buffer: PBS, pH 7.3, with 0.02% sodium azide and 50% glycerol.

Note: This product is for research use only.