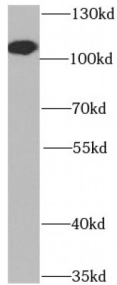


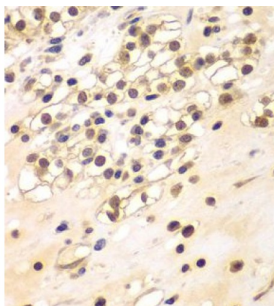
Abbexa Ltd, Innovation Centre, Cambridge Science Park, Cambridge, CB4 0EY, UK
 Telephone: +44 (0) 1223 755950 - Fax: +44 (0) 1223 755951 - E-Mail: info@abbexa.com

Breast Carcinoma Amplified Sequence 3 (BCAS3) Antibody

Catalogue No.: abx230829



WB analysis of HeLa cells cells, using BCAS3 Antibody (1/1000 dilution).



IHC analysis of paraffin-embedded human kidney cancer, using BCAS3 Antibody (1/100 dilution).

BCAS3 Antibody is a Rabbit Polyclonal against BCAS3.

Target: BCAS3

Reactivity: Human, Mouse, Rat

Host: Rabbit

Clonality: Polyclonal

Tested Applications: ELISA, WB, IHC, IF/ICC

Recommended dilutions: WB: 1/500 - 1/2000, IHC: 1/50 - 1/200, IF/ICC: 1/50 - 1/100. Optimal dilutions/concentrations should be determined by the end user.

Immunogen: breast carcinoma amplified sequence 3

Purity: > 95% (SDS-PAGE)

Purification: Immunogen affinity purified.

Form: Liquid

Isotype: IgG

Abbexa Ltd, Innovation Centre, Cambridge Science Park, Cambridge, CB4 0EY, UK
Telephone: +44 (0) 1223 755950 - Fax: +44 (0) 1223 755951 - E-Mail: info@abbexa.com

Conjugation: Unconjugated

Storage: Store at -20°C for 24 months. Avoid repeated freeze/thaw cycles.

Molecular Weight: 115 kDa

Swiss Prot: [Q9H6U6](#)

Buffer: PBS, pH 7.3, with 0.02% sodium azide and 50% glycerol.

Note: This product is for research use only.