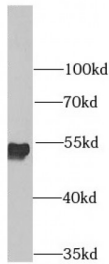
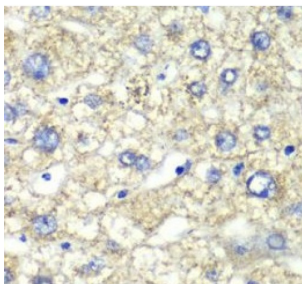


ATP Synthase Subunit Alpha, Mitochondrial (ATP5A1) Antibody

Catalogue No.: abx230702



WB analysis of mouse kidney tissue, using ATP5A1 antibody (1/1000 dilution).



IHC analysis of paraffin-embedded human liver injury, using ATP5A1 antibody (1/100 dilution).

ATP5A1 Antibody is a Rabbit Polyclonal against ATP5A1.

Target:	ATP5A1
Reactivity:	Human, Mouse, Rat
Host:	Rabbit
Clonality:	Polyclonal
Tested Applications:	ELISA, WB, IHC, IF/ICC, IP
Recommended dilutions:	WB: 1/500 - 1/2000, IHC: 1/50 - 1/200, IF/ICC: 1/50 - 1/100, IP: 1/50 - 1/200. Optimal dilutions/concentrations should be determined by the end user.
Immunogen:	ATP synthase, H ⁺ transporting, mitochondrial F1 complex, alpha subunit 1, cardiac muscle
Purity:	> 95% (SDS-PAGE)
Purification:	Immunogen affinity purified.
Form:	Liquid
Isotype:	IgG

Abbexa Ltd, Innovation Centre, Cambridge Science Park, Cambridge, CB4 0EY, UK
Telephone: +44 (0) 1223 755950 - Fax: +44 (0) 1223 755951 - E-Mail: info@abbexa.com

Conjugation: Unconjugated

Storage: Store at -20°C for 24 months. Avoid repeated freeze/thaw cycles.

Molecular Weight: 54 kDa

Swiss Prot: [P25705](#)

Buffer: PBS, pH 7.3, with 0.02% sodium azide and 50% glycerol.

Note: This product is for research use only.