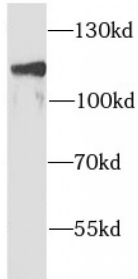


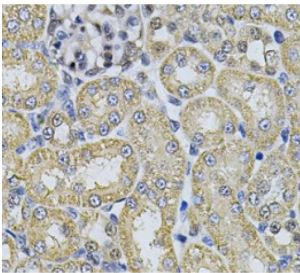
Abbexa Ltd, Innovation Centre, Cambridge Science Park, Cambridge, CB4 0EY, UK  
Telephone: +44 (0) 1223 755950 - Fax: +44 (0) 1223 755951 - E-Mail: info@abbexa.com

### alpha Adaptin (alpha Adaptin) Antibody

Catalogue No.: abx230323



WB analysis of HEK-293 cells, using AP2A1 antibody (1/1000 dilution).



IHC analysis of paraffin-embedded rat kidney, using AP2A1 antibody (1/100 dilution).

alpha Adaptin Antibody is a Rabbit Polyclonal against alpha Adaptin.

**Target:** alpha Adaptin

**Reactivity:** Human, Mouse, Rat

**Host:** Rabbit

**Clonality:** Polyclonal

**Tested Applications:** ELISA, WB, IHC

**Recommended dilutions:** WB: 1/500 - 1/2000, IHC: 1/50 - 1/200. Optimal dilutions/concentrations should be determined by the end user.

**Immunogen:** adaptor-related protein complex 2, alpha 1 subunit

**Purity:** > 95% (SDS-PAGE)

**Purification:** Immunogen affinity purified.

**Form:** Liquid

**Isotype:** IgG

Abbexa Ltd, Innovation Centre, Cambridge Science Park, Cambridge, CB4 0EY, UK  
Telephone: +44 (0) 1223 755950 - Fax: +44 (0) 1223 755951 - E-Mail: [info@abbexa.com](mailto:info@abbexa.com)

**Conjugation:** Unconjugated

**Storage:** Store at -20°C for 24 months. Avoid repeated freeze/thaw cycles.

**Molecular Weight:** 108 kDa

**Swiss Prot:** [O95782](#)

**Buffer:** PBS, pH 7.3, with 0.02% sodium azide and 50% glycerol.

**Note:** This product is for research use only.