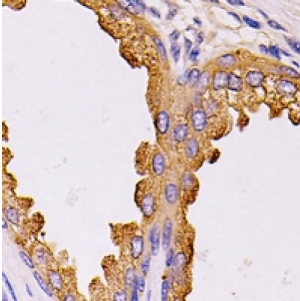


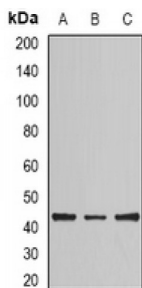
Abbexa Ltd, Innovation Centre, Cambridge Science Park, Cambridge, CB4 0EY, UK
Telephone: +44 (0) 1223 755950 - Fax: +44 (0) 1223 755951 - E-Mail: info@abbexa.com

NCK Adaptor Protein 2 (NCK2) Antibody

Catalogue No.: abx225307



Immunohistochemical analysis of NCK2 staining in human prostate formalin fixed paraffin embedded tissue section. The section was pre-treated using heat mediated antigen retrieval with sodium citrate buffer (pH 6.0). The section was then incubated with the antibody at room temperature and detected using an HRP conjugated compact polymer system. DAB was used as the chromogen. The section was then counterstained with haematoxylin and mounted with DPX.



Western blot analysis of NCK2 expression in HEK293T (A), mouse lung (B), rat brain (C) whole cell lysates.

NCK2 Antibody is a Rabbit Polyclonal against NCK2.

Target: NCK2

Reactivity: Human, Mouse, Rat

Host: Rabbit

Clonality: Polyclonal

Tested Applications: WB, IHC

Recommended dilutions: WB: 1/500 - 1/2000, IHC: 1/50 - 1/100. Optimal dilutions/concentrations should be determined by the end user.

Immunogen: Recombinant full length protein of human NCK2.

Purification: The antibody was purified by immunogen affinity chromatography.

Form: Liquid

Isotype: IgG

Specificity: Recognizes endogenous levels of NCK2 protein.

Abbexa Ltd, Innovation Centre, Cambridge Science Park, Cambridge, CB4 0EY, UK
Telephone: +44 (0) 1223 755950 - Fax: +44 (0) 1223 755951 - E-Mail: info@abbexa.com

Storage: Shipped at 4°C. Aliquot and store at -20°C for one year. Avoid freeze/thaw cycles.

Swiss Prot: [O43639](#)

GeneID: [8440 17974](#)

Gene Symbol: NCK2

Buffer: 0.42% Potassium phosphate, 0.87% Sodium chloride, pH 7.3, 30% glycerol, and 0.01% sodium azide.

Note: This product is for research use only.