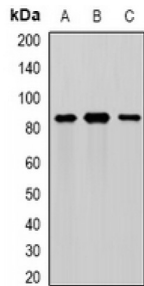


Abbexa Ltd, Innovation Centre, Cambridge Science Park, Cambridge, CB4 0EY, UK
Telephone: +44 (0) 1223 755950 - Fax: +44 (0) 1223 755951 - E-Mail: info@abbexa.com

Meprin A, Alpha/PABA Peptide Hydrolase (MEP1A) Antibody

Catalogue No.: abx225290



Western blot analysis of MEP1A expression in mouse intestine (A), mouse pancreas (B), rat kidney (C) whole cell lysates.

MEP1A Antibody is a Rabbit Polyclonal against MEP1A.

Target: MEP1A

Reactivity: Human

Host: Rabbit

Clonality: Polyclonal

Tested Applications: WB

Recommended dilutions: WB: 1/500 - 1/2000. Optimal dilutions/concentrations should be determined by the end user.

Immunogen: Recombinant full length protein of human MEP1A.

Purification: The antibody was purified by immunogen affinity chromatography.

Form: Liquid

Isotype: IgG

Specificity: Recognizes endogenous levels of MEP1A protein.

Storage: Shipped at 4°C. Aliquot and store at -20°C for one year. Avoid freeze/thaw cycles.

Swiss Prot: [Q16819](#)

GeneID: [4224](#)

Gene Symbol: MEP1A

Abbexa Ltd, Innovation Centre, Cambridge Science Park, Cambridge, CB4 0EY, UK
Telephone: +44 (0) 1223 755950 - Fax: +44 (0) 1223 755951 - E-Mail: info@abbexa.com

Buffer: 0.42% Potassium phosphate, 0.87% Sodium chloride, pH 7.3, 30% glycerol, and 0.01% sodium azide.

Note: This product is for research use only.