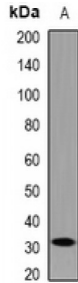


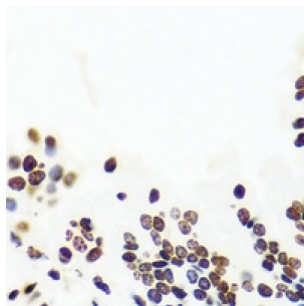
Abbexa Ltd, Innovation Centre, Cambridge Science Park, Cambridge, CB4 0EY, UK  
Telephone: +44 (0) 1223 755950 - Fax: +44 (0) 1223 755951 - E-Mail: info@abbexa.com

## HOXA1 / B1 / D1 Antibody

Catalogue No.: abx225220



Western blot analysis of HOXA1/B1/D1 expression in mouse heart (A) whole cell lysates.



Immunohistochemical analysis of HOXA1/B1/D1 staining in mouse lung formalin fixed paraffin embedded tissue section. The section was pre-treated using heat mediated antigen retrieval with sodium citrate buffer (pH 6.0). The section was then incubated with the antibody at room temperature and detected using an HRP conjugated compact polymer system. DAB was used as the chromogen. The section was then counterstained with haematoxylin and mounted with DPX.

HOXA1/B1/D1 Antibody is a Rabbit Polyclonal against HOXA1/B1/D1.

**Target:** HOXA1/B1/D1

**Reactivity:** Human, Mouse

**Host:** Rabbit

**Clonality:** Polyclonal

**Tested Applications:** WB, IHC

**Recommended dilutions:** WB: 1/500 - 1/2000, IHC: 1/50 - 1/200. Optimal dilutions/concentrations should be determined by the end user.

**Immunogen:** Recombinant full length protein of human HOXA1/B1/D1.

**Purification:** The antibody was purified by immunogen affinity chromatography.

**Form:** Liquid

**Isotype:** IgG

**Specificity:** Recognizes endogenous levels of HOXA1/B1/D1 protein.

Abbexa Ltd, Innovation Centre, Cambridge Science Park, Cambridge, CB4 0EY, UK  
Telephone: +44 (0) 1223 755950 - Fax: +44 (0) 1223 755951 - E-Mail: [info@abbexa.com](mailto:info@abbexa.com)

**Storage:** Shipped at 4°C. Aliquot and store at -20°C for one year. Avoid freeze/thaw cycles.

**Swiss Prot:** [P14653](#)

**GeneID:** [3211 15407](#)

**Gene Symbol:** HOXB1

**Buffer:** 0.42% Potassium phosphate, 0.87% Sodium chloride, pH 7.3, 30% glycerol, and 0.01% sodium azide.

**Note:** This product is for research use only.