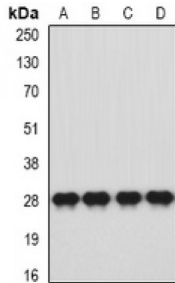


Abbexa Ltd, Innovation Centre, Cambridge Science Park, Cambridge, CB4 0EY, UK
 Telephone: +44 (0) 1223 755950 - Fax: +44 (0) 1223 755951 - E-Mail: info@abbexa.com

HLA Class II Histocompatibility Antigen, DQ Alpha 1 Chain (HLA-DQA1) Antibody

Catalogue No.: abx225215



Western blot analysis of HLA-DQA1 expression in SW620 (A), HT29 (B), mouse brain (C), mouse stomach (D) whole cell lysates.

HLA-DQA1 Antibody is a Rabbit Polyclonal against HLA-DQA1.

Target: HLA-DQA1

Reactivity: Human

Host: Rabbit

Clonality: Polyclonal

Tested Applications: WB

Recommended dilutions: WB: 1/500 - 1/2000. Optimal dilutions/concentrations should be determined by the end user.

Immunogen: Recombinant full length protein of human HLA-DQA1.

Purification: The antibody was purified by immunogen affinity chromatography.

Form: Liquid

Isotype: IgG

Specificity: Recognizes endogenous levels of HLA-DQA1 protein.

Storage: Shipped at 4°C. Aliquot and store at -20°C for one year. Avoid freeze/thaw cycles.

Swiss Prot: [P01909](#)

GeneID: [100509457](#) [3117](#)

Gene Symbol: HLA-DQA1

Abbexa Ltd, Innovation Centre, Cambridge Science Park, Cambridge, CB4 0EY, UK
Telephone: +44 (0) 1223 755950 - Fax: +44 (0) 1223 755951 - E-Mail: info@abbexa.com

Buffer: 0.42% Potassium phosphate, 0.87% Sodium chloride, pH 7.3, 30% glycerol, and 0.01% sodium azide.

Note: This product is for research use only.