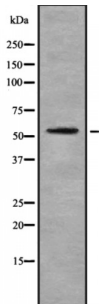


Abbexa Ltd, Innovation Centre, Cambridge Science Park, Cambridge, CB4 0EY, UK  
Telephone: +44 (0) 1223 755950 - Fax: +44 (0) 1223 755951 - E-Mail: [info@abbexa.com](mailto:info@abbexa.com)

## Excitatory Amino Acid Transporter 1 (SLC1A3/EAAT1) Antibody

Catalogue No.: abx218612



Western blot analysis of EAAT1 using COLO205 whole cell lysates.

SLC1A3 Antibody is a Rabbit Polyclonal against SLC1A3.

**Target:** Excitatory Amino Acid Transporter 1 (SLC1A3/EAAT1)

**Reactivity:** Human

**Host:** Rabbit

**Clonality:** Polyclonal

**Tested Applications:** WB

**Recommended dilutions:** WB: 1/1000 - 1/3000. Optimal dilutions/concentrations should be determined by the end user.

**Immunogen:** Synthesised peptide derived from human EAAT1

**Purification:** Purified by affinity chromatography using epitope-specific peptide.

**Form:** Liquid

**Conjugation:** Unconjugated

**Specificity:** EAAT1 Antibody detects endogenous levels of total EAAT1

**Storage:** Aliquot and store at -20 °C. Avoid repeated freeze/thaw cycles.

**Molecular Weight:** 59 kDa

**Swiss Prot:** [P43003](#)

**GeneID:** [6507](#)

Abbexa Ltd, Innovation Centre, Cambridge Science Park, Cambridge, CB4 0EY, UK  
Telephone: +44 (0) 1223 755950 - Fax: +44 (0) 1223 755951 - E-Mail: [info@abbexa.com](mailto:info@abbexa.com)

**Gene Symbol:** SLC1A3

**Ensembl:** ENSG00000079215

**Concentration:** 1 mg/ml

**Buffer:** PBS, pH 7.4, 150 mM NaCl, 0.02% sodium azide and 50% glycerol.

**Note:** This product is for research use only.