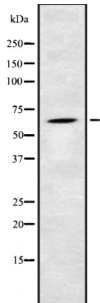


Abbexa Ltd, Innovation Centre, Cambridge Science Park, Cambridge, CB4 0EY, UK
Telephone: +44 (0) 1223 755950 - Fax: +44 (0) 1223 755951 - E-Mail: info@abbexa.com

5'-AMP-Activated Protein Kinase Subunit Gamma-2 (AMPK gamma 2) Antibody

Catalogue No.: abx217936



Western blot analysis of AMPKgamma2 using K562 whole cell lysates.

AMPK gamma 2 Antibody is a Rabbit Polyclonal against AMPK gamma 2.

Target: AMPK gamma 2

Reactivity: Human, Mouse, Rat

Host: Rabbit

Clonality: Polyclonal

Tested Applications: WB

Recommended dilutions: WB: 1/1000. Optimal dilutions/concentrations should be determined by the end user.

Immunogen: Synthesised peptide derived from human AMPKgamma2

Purification: Purified by affinity chromatography using epitope-specific peptide.

Form: Liquid

Conjugation: Unconjugated

Specificity: AMPKgamma2 Antibody detects endogenous levels of total AMPKgamma2

Storage: Aliquot and store at -20 °C. Avoid repeated freeze/thaw cycles.

Molecular Weight: 65 kDa

Swiss Prot: [Q9UGJ0](#)

GeneID: [51422](#)

Abbexa Ltd, Innovation Centre, Cambridge Science Park, Cambridge, CB4 0EY, UK
Telephone: +44 (0) 1223 755950 - Fax: +44 (0) 1223 755951 - E-Mail: info@abbexa.com

Gene Symbol: PRKAG2

Ensembl: ENSG00000106617

Concentration: 1 mg/ml

Buffer: PBS, pH 7.4, 150 mM NaCl, 0.02% sodium azide and 50% glycerol.

Note: This product is for research use only.