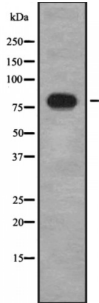


Abbexa Ltd, Innovation Centre, Cambridge Science Park, Cambridge, CB4 0EY, UK
Telephone: +44 (0) 1223 755950 - Fax: +44 (0) 1223 755951 - E-Mail: info@abbexa.com

Lanosterol Synthase (LSS) Antibody

Catalogue No.: abx216619



Western blot analysis of LSS using COS7 whole cell lysates.

LSS Antibody is a Rabbit Polyclonal against LSS.

Target: LSS

Reactivity: Human

Host: Rabbit

Clonality: Polyclonal

Tested Applications: WB

Recommended dilutions: WB: 1/1000 - 1/3000. Optimal dilutions/concentrations should be determined by the end user.

Immunogen: Synthesised peptide derived from human LSS

Purification: Purified by affinity chromatography using epitope-specific peptide.

Form: Liquid

Conjugation: Unconjugated

Specificity: LSS Antibody detects endogenous levels of total LSS

Storage: Aliquot and store at -20 °C. Avoid repeated freeze/thaw cycles.

Molecular Weight: 83 kDa

Swiss Prot: [P48449](#)

GeneID: [4047](#)

Abbexa Ltd, Innovation Centre, Cambridge Science Park, Cambridge, CB4 0EY, UK
Telephone: +44 (0) 1223 755950 - Fax: +44 (0) 1223 755951 - E-Mail: info@abbexa.com

Gene Symbol: LSS

Ensembl: ENSG00000160285

Concentration: 1 mg/ml

Buffer: PBS, pH 7.4, 150 mM NaCl, 0.02% sodium azide and 50% glycerol.

Note: This product is for research use only.