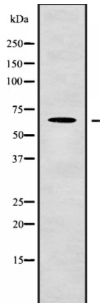


Leucine-Rich Repeat And Immunoglobulin-Like Domain-Containing Nogo Receptor-Interacting Protein 2 (LINGO2) Antibody

Catalogue No.: abx216573



Western blot analysis of LINGO2 using COLO205 whole cell lysates.

LINGO2 Antibody is a Rabbit Polyclonal against LINGO2.

Target: LINGO2**Reactivity:** Human, Mouse**Host:** Rabbit**Clonality:** Polyclonal**Tested Applications:** WB**Recommended dilutions:** WB: 1/1000 - 1/3000. Optimal dilutions/concentrations should be determined by the end user.**Immunogen:** Synthesised peptide derived from human LINGO2**Purification:** Purified by affinity chromatography using epitope-specific peptide.**Form:** Liquid**Conjugation:** Unconjugated**Specificity:** LINGO2 Antibody detects endogenous levels of total LINGO2**Storage:** Aliquot and store at -20 °C. Avoid repeated freeze/thaw cycles.**Molecular Weight:** 68 kDa**Swiss Prot:** [Q7L985](#)**GeneID:** [158038](#)

Abbexa Ltd, Innovation Centre, Cambridge Science Park, Cambridge, CB4 0EY, UK
Telephone: +44 (0) 1223 755950 - Fax: +44 (0) 1223 755951 - E-Mail: info@abbexa.com

Gene Symbol: LINGO2

Ensembl: ENSG00000174482

Concentration: 1 mg/ml

Buffer: PBS, pH 7.4, 150 mM NaCl, 0.02% sodium azide and 50% glycerol.

Note: This product is for research use only.