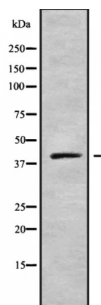


Abbexa Ltd, Innovation Centre, Cambridge Science Park, Cambridge, CB4 0EY, UK
Telephone: +44 (0) 1223 755950 - Fax: +44 (0) 1223 755951 - E-Mail: info@abbexa.com

Inward Rectifier Potassium Channel 13 (KCNJ13) Antibody

Catalogue No.: abx216385



Western blot analysis of KCNJ13 using Jurkat whole cell lysates.

KCNJ13 Antibody is a Rabbit Polyclonal against KCNJ13.

Target: KCNJ13

Reactivity: Human

Host: Rabbit

Clonality: Polyclonal

Tested Applications: WB

Recommended dilutions: WB: 1/1000 - 1/3000. Optimal dilutions/concentrations should be determined by the end user.

Immunogen: Synthesised peptide derived from human KCNJ13

Purification: Purified by affinity chromatography using epitope-specific peptide.

Form: Liquid

Conjugation: Unconjugated

Specificity: KCNJ13 Antibody detects endogenous levels of total KCNJ13

Storage: Aliquot and store at -20 °C. Avoid repeated freeze/thaw cycles.

Molecular Weight: 41 kDa

Swiss Prot: [O60928](#)

GeneID: [3769](#)

Abbexa Ltd, Innovation Centre, Cambridge Science Park, Cambridge, CB4 0EY, UK
Telephone: +44 (0) 1223 755950 - Fax: +44 (0) 1223 755951 - E-Mail: info@abbexa.com

Gene Symbol: KCNJ13

Ensembl: ENSG00000115474

Concentration: 1 mg/ml

Buffer: PBS, pH 7.4, 150 mM NaCl, 0.02% sodium azide and 50% glycerol.

Note: This product is for research use only.