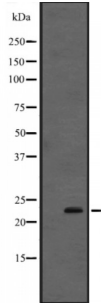


Abbexa Ltd, Innovation Centre, Cambridge Science Park, Cambridge, CB4 0EY, UK
Telephone: +44 (0) 1223 755950 - Fax: +44 (0) 1223 755951 - E-Mail: info@abbexa.com

Interferon Alpha 4 (IFNA4) Antibody

Catalogue No.: abx216154



Western blot analysis of IFNA4 expression in Human fetal stomach lysate. The lane on the left is treated with the antigen-specific peptide.

IFNA4 Antibody is a Rabbit Polyclonal against IFNA4.

Target: IFNA4

Reactivity: Human

Host: Rabbit

Clonality: Polyclonal

Tested Applications: WB

Recommended dilutions: WB: 1/500 - 1/2000. Optimal dilutions/concentrations should be determined by the end user.

Immunogen: Synthesised peptide derived from human IFNA4

Purification: Purified by affinity chromatography using epitope-specific peptide.

Form: Liquid

Conjugation: Unconjugated

Specificity: IFNA4 antibody detects endogenous levels of total IFNA4

Storage: Aliquot and store at -20 °C. Avoid repeated freeze/thaw cycles.

Molecular Weight: 22 kDa

Swiss Prot: [P05014](#) [P01566](#) [P01570](#)

GeneID: [3441](#) [3446](#) [3448](#)

Abbexa Ltd, Innovation Centre, Cambridge Science Park, Cambridge, CB4 0EY, UK
Telephone: +44 (0) 1223 755950 - Fax: +44 (0) 1223 755951 - E-Mail: info@abbexa.com

Gene Symbol: IFNA4

Ensembl: ENSG00000236637

Concentration: 1 mg/ml

Buffer: PBS, pH 7.4, 150 mM NaCl, 0.02% sodium azide and 50% glycerol.

Note: This product is for research use only.